




Viewpoint 10      View from National Cycle Network (Route 647) (Summer)

Type: Type 1  
Projection: Cylindrical  
48% @ A3, 96% @ A1  
Camera: Canon EOS 6D MkII  
Lens: Canon 50mm

Looking direction: west  
HfoV: 90 degrees  
Date captured: 07.03.2024

<div>ICENI PROJECTS LIMITED</div> <div>Da Vinci House 44 Saffron Hill</div> <div>London, ECN1 8FH</div> <div></div>	PROJECT	One Earth Solar Farm	DRAWN BY	JG	DRAWING NO.
	DRAWING TITLE	Appendix 12-6: Representative Viewpoint Photography	CHECKED BY	SG	Figure 12-10-S
	CLIENT	One Earth Solar Ltd	DATE	30/04/2024	REV
					-





Viewpoint 11      View from public bridleway (NT/Thorney/BW19) (Winter)

Type: Type 1  
Projection: Cylindrical  
48% @ A3, 96% @ A1  
Camera: Canon EOS 6D MkII  
Lens: Canon 50mm

Looking direction: west  
HfoV: 90 degrees  
Date captured: 07.03.2024

<div><div>ICENI PROJECTS LIMITED</div><div>Da Vinci House 44 Saffron Hill</div><div>London, ECN1 8FH</div></div> <div></div>	PROJECT	One Earth Solar Farm	DRAWN BY	JG	DRAWING NO.
	DRAWING TITLE	Appendix 12-6: Representative Viewpoint Photography	CHECKED BY	SG	Figure 12-11-W
	CLIENT	One Earth Solar Ltd	DATE	30/04/2024	REV
					-





Viewpoint 11      View from public bridleway (NT/Thorney/BW19) (Summer)

Type: Type 1  
Projection: Cylindrical  
48% @ A3, 96% @ A1  
Camera: Canon EOS 6D MkII  
Lens: Canon 50mm

Looking direction: west  
HfoV: 90 degrees  
Date captured: 07.03.2024






Viewpoint 12      View from National Cycle Network (Route 647) (Winter)

Type: Type 1  
Projection: Cylindrical  
48% @ A3, 96% @ A1  
Camera: Canon EOS 6D MkII  
Lens: Canon 50mm

Looking direction: west  
HfoV: 90 degrees  
Date captured: 07.03.2024

<div>ICENI PROJECTS LIMITED</div> <div>Da Vinci House 44 Saffron Hill</div> <div>London, ECN1 8FH</div> <div></div>	PROJECT	One Earth Solar Farm	DRAWN BY	JG	DRAWING NO.
	DRAWING TITLE	Appendix 12-6: Representative Viewpoint Photography	CHECKED BY	SG	Figure 12-12-W
	CLIENT	One Earth Solar Ltd	DATE	30/04/2024	REV
					-



### Approximate extent of Order Limits



Type: Type 1  
Projection: Cylindrical  
48% @ A3, 96% @ A1  
Camera: Canon EOS 6D MkII  
Lens: Canon 50mm

Looking direction: west  
Hfov: 90 degrees  
Date captured: 07.03.2024






Viewpoint 13      View from Moor Lane (Winter)

Type: Type 1  
Projection: Cylindrical  
48% @ A3, 96% @ A1  
Camera: Canon EOS 6D MkII  
Lens: Canon 50mm

Looking direction: north  
HfoV: 90 degrees  
Date captured: 07.03.2024

<div>ICENI PROJECTS LIMITED</div> <div>Da Vinci House 44 Saffron Hill</div> <div>London, ECN1 8FH</div> <div></div>	PROJECT	One Earth Solar Farm	DRAWN BY	JG	DRAWING NO.
	DRAWING TITLE	Appendix 12-6: Representative Viewpoint Photography	CHECKED BY	SG	Figure 12-13-W
	CLIENT	One Earth Solar Ltd	DATE	30/04/2024	REV
					-






Viewpoint 13      View from Moor Lane (Summer)

Type: Type 1  
Projection: Cylindrical  
48% @ A3, 96% @ A1  
Camera: Canon EOS 6D MkII  
Lens: Canon 50mm

Looking direction: north  
HfoV: 90 degrees  
Date captured: 07.03.2024

<div><div>ICENI PROJECTS LIMITED</div><div>Da Vinci House 44 Saffron Hill</div><div>London, ECN1 8FH</div></div> <div></div>	PROJECT	One Earth Solar Farm	DRAWN BY	JG	DRAWING NO.
	DRAWING TITLE	Appendix 12-6: Representative Viewpoint Photography	CHECKED BY	SG	Figure 12-13-S
	CLIENT	One Earth Solar Ltd	DATE	30/04/2024	REV
					-






Viewpoint 14      View from Birkland Lane and public footpath (NT/South Clifton/FP9) (Winter)

Type: Type 1  
Projection: Cylindrical  
48% @ A3, 96% @ A1  
Camera: Canon EOS 6D MkII  
Lens: Canon 50mm

Looking direction: north  
HfoV: 90 degrees  
Date captured: 07.03.2024

<div>ICENI PROJECTS LIMITED</div> <div>Da Vinci House 44 Saffron Hill</div> <div>London, ECN1 8FH</div> <div></div>	PROJECT	One Earth Solar Farm	DRAWN BY	JG	DRAWING NO.
	DRAWING TITLE	Appendix 12-6: Representative Viewpoint Photography	CHECKED BY	SG	Figure 12-14-W
	CLIENT	One Earth Solar Ltd	DATE	30/04/2024	REV
					-






Viewpoint 14      View from Birkland Lane and public footpath (NT/South Clifton/FP9) (Summer)

Type: Type 1  
Projection: Cylindrical  
48% @ A3, 96% @ A1  
Camera: Canon EOS 6D MkII  
Lens: Canon 50mm

Looking direction: north  
HfoV: 90 degrees  
Date captured: 07.03.2024

<div>ICENI PROJECTS LIMITED</div> <div>Da Vinci House 44 Saffron Hill</div> <div>London, ECN1 8FH</div> <div></div>	PROJECT	One Earth Solar Farm	DRAWN BY	JG	DRAWING NO.
	DRAWING TITLE	Appendix 12-6: Representative Viewpoint Photography	CHECKED BY	SG	Figure 12-14-S
	CLIENT	One Earth Solar Ltd	DATE	30/04/2024	REV
				-	





Viewpoint 15      View from Top Road, Wigsley (Winter)

Type: Type 1  
Projection: Cylindrical  
48% @ A3, 96% @ A1  
Camera: Canon EOS 6D MkII  
Lens: Canon 50mm

Looking direction: west  
HfoV: 90 degrees  
Date captured: 07.03.2024

<div>ICENI PROJECTS LIMITED</div> <div>Da Vinci House 44 Saffron Hill</div> <div>London, ECN1 8FH</div> <div>iceni</div>	PROJECT	One Earth Solar Farm	DRAWN BY	JG	DRAWING NO.
	DRAWING TITLE	Appendix 12-6: Representative Viewpoint Photography	CHECKED BY	SG	Figure 12-15-W
	CLIENT	One Earth Solar Ltd	DATE	30/04/2024	REV
					-





Viewpoint 15      View from Top Road, Wigsley (Summer)

Type: Type 1  
Projection: Cylindrical  
48% @ A3, 96% @ A1  
Camera: Canon EOS 6D MkII  
Lens: Canon 50mm

Looking direction: west  
HfoV: 90 degrees  
Date captured: 07.03.2024

<div><div>ICENI PROJECTS LIMITED</div><div>Da Vinci House 44 Saffron Hill</div><div>London, ECN1 8FH</div></div> <div></div>	PROJECT	One Earth Solar Farm	DRAWN BY	JG	DRAWING NO.
	DRAWING TITLE	Appendix 12-6: Representative Viewpoint Photography	CHECKED BY	SG	Figure 12-15-S
	CLIENT	One Earth Solar Ltd	DATE	30/04/2024	REV
					-






Viewpoint 16      View from A1133 near to junction with Vicarage Road (Winter)

Type: Type 1  
Projection: Cylindrical  
48% @ A3, 96% @ A1  
Camera: Canon EOS 6D MkII  
Lens: Canon 50mm

Looking direction: west  
HfoV: 90 degrees  
Date captured: 07.03.2024

<div><div>ICENI PROJECTS LIMITED</div><div>Da Vinci House 44 Saffron Hill</div><div>London, ECN1 8FH</div></div> <div></div>	PROJECT	One Earth Solar Farm	DRAWN BY	JG	DRAWING NO.
	DRAWING TITLE	Appendix 12-6: Representative Viewpoint Photography	CHECKED BY	SG	Figure 12-16-W
	CLIENT	One Earth Solar Ltd	DATE	30/04/2024	REV






Viewpoint 16      View from A1133 near to junction with Vicarage Road (Summer)

Type: Type 1  
Projection: Cylindrical  
48% @ A3, 96% @ A1  
Camera: Canon EOS 6D MkII  
Lens: Canon 50mm

Looking direction: west  
HfoV: 90 degrees  
Date captured: 07.03.2024

<div><div>ICENI PROJECTS LIMITED</div><div>Da Vinci House 44 Saffron Hill</div><div>London, ECN1 8FH</div></div> <div></div>	PROJECT	One Earth Solar Farm	DRAWN BY	JG	DRAWING NO.
	DRAWING TITLE	Appendix 12-6: Representative Viewpoint Photography	CHECKED BY	SG	Figure 12-16-S
	CLIENT	One Earth Solar Ltd	DATE	30/04/2024	REV






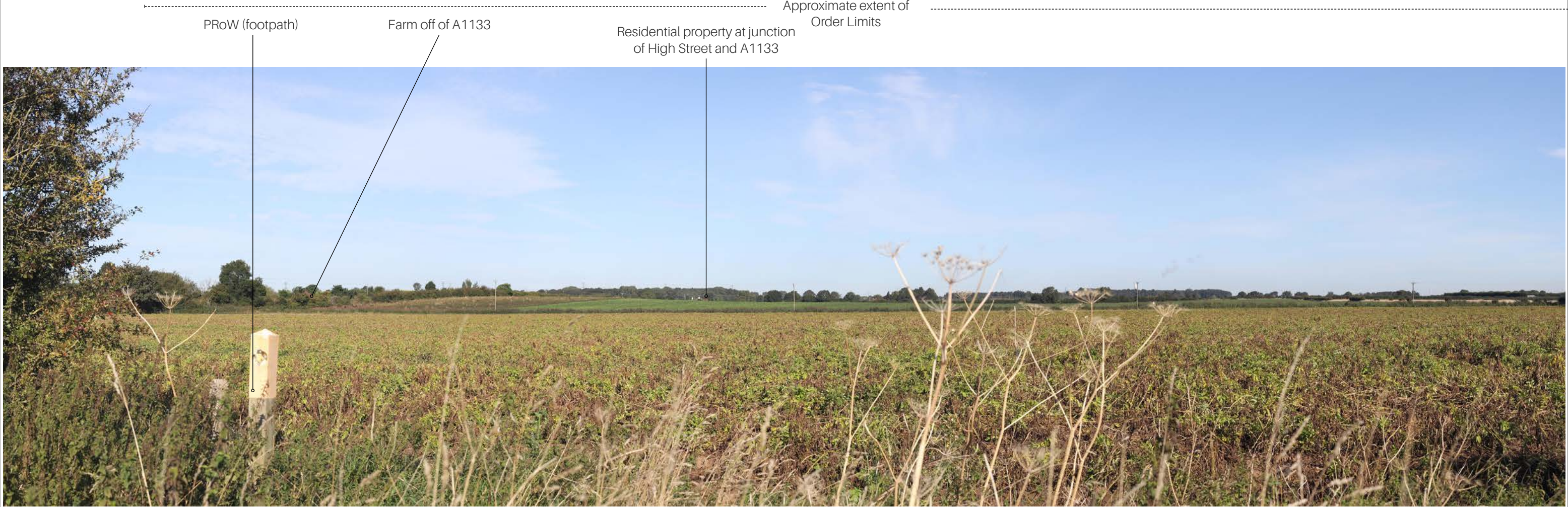
Viewpoint 17      View from public footpath (NT/Spalford/FP7), north of Spalford (Winter)

Type: Type 1  
Projection: Cylindrical  
48% @ A3, 96% @ A1  
Camera: Canon EOS 6D MkII  
Lens: Canon 50mm

Looking direction: north  
HfoV: 90 degrees  
Date captured: 07.03.2024

<div>ICENI PROJECTS LIMITED</div> <div>Da Vinci House 44 Saffron Hill</div> <div>London, ECN1 8FH</div> <div></div>	PROJECT	One Earth Solar Farm	DRAWN BY	JG	DRAWING NO. Figure 12-17-W
	DRAWING TITLE	Appendix 12-6: Representative Viewpoint Photography	CHECKED BY	SG	
	CLIENT	One Earth Solar Ltd	DATE	30/04/2024	REV -





Viewpoint 17      View from public footpath (NT/Spalford/FP7), north of Spalford (Summer)

Type: Type 1  
Projection: Cylindrical  
48% @ A3, 96% @ A1  
Camera: Canon EOS 6D MkII  
Lens: Canon 50mm

Looking direction: north  
HfoV: 90 degrees  
Date captured: 07.03.2024

<div>ICENI PROJECTS LIMITED</div> <div>Da Vinci House 44 Saffron Hill</div> <div>London, ECN1 8FH</div> <div></div>	PROJECT	One Earth Solar Farm	DRAWN BY	JG	DRAWING NO. Figure 12-17-S
	DRAWING TITLE	Appendix 12-6: Representative Viewpoint Photography	CHECKED BY	SG	
	CLIENT	One Earth Solar Ltd	DATE	30/04/2024	REV -





Viewpoint 18

View from public footpath (NT/South Clifton/FP3), on Clifton Hill, south of South Clifton (Winter)

Type: Type 1  
Projection: Cylindrical  
48% @ A3, 96% @ A1  
Camera: Canon EOS 6D MkII  
Lens: Canon 50mm

Looking direction: north  
HfoV: 90 degrees  
Date captured: 07.03.2024






Viewpoint 19      View from South Clifton High Street (Winter)

Type: Type 1  
Projection: Cylindrical  
48% @ A3, 96% @ A1  
Camera: Canon EOS 6D MkII  
Lens: Canon 50mm

Looking direction: north east  
HfoV: 90 degrees  
Date captured: 07.03.2024

<div><div>ICENI PROJECTS LIMITED</div><div>Da Vinci House 44 Saffron Hill</div><div>London, ECN1 8FH</div></div> <div></div>	PROJECT	One Earth Solar Farm	DRAWN BY	JG	DRAWING NO.
	DRAWING TITLE	Appendix 12-6: Representative Viewpoint Photography	CHECKED BY	SG	Figure 12-19-W
	CLIENT	One Earth Solar Ltd	DATE	30/04/2024	REV
					-






Approximate extent of Order Limits

Viewpoint 19 View from South Clifton High Street (Summer)

Type: Type 1  
Projection: Cylindrical  
48% @ A3, 96% @ A1  
Camera: Canon EOS 6D MkII  
Lens: Canon 50mm  
Looking direction: north east  
HfoV: 90 degrees  
Date captured: 07.03.2024

<div>ICENI PROJECTS LIMITED</div> <div>Da Vinci House 44 Saffron Hill</div> <div>London, ECN1 8FH</div> <div></div>	PROJECT	One Earth Solar Farm	DRAWN BY JG	DRAWING NO.
	DRAWING TITLE	Appendix 12-6: Representative Viewpoint Photography	CHECKED BY SG	Figure 12-19-S
	CLIENT	One Earth Solar Ltd	DATE 30/04/2024	REV -






Viewpoint 20      View from Church Lane, adjacent to North Clifton Primary School (Winter)

Type: Type 1  
Projection: Cylindrical  
48% @ A3, 96% @ A1  
Camera: Canon EOS 6D MkII  
Lens: Canon 50mm

Looking direction: east  
HfoV: 90 degrees  
Date captured: 07.03.2024

<div><b>ICENI PROJECTS LIMITED</b> Da Vinci House 44 Saffron Hill London, ECN1 8FH</div> <div></div>	PROJECT	One Earth Solar Farm	DRAWN BY	JG	DRAWING NO.
	DRAWING TITLE	Appendix 12-6: Representative Viewpoint Photography	CHECKED BY	SG	Figure 12-20-W
	CLIENT	One Earth Solar Ltd	DATE	30/04/2024	REV
					-





Viewpoint 21      View from public footpath (NT/South Clifton/FP2), west of St George's Church (Winter)

Type: Type 1  
Projection: Cylindrical  
48% @ A3, 96% @ A1  
Camera: Canon EOS 6D MkII  
Lens: Canon 50mm

Looking direction: north west  
HfoV: 90 degrees  
Date captured: 07.03.2024

<div>ICENI PROJECTS LIMITED</div> <div>Da Vinci House 44 Saffron Hill</div> <div>London, ECN1 8FH</div> <div></div>	PROJECT	One Earth Solar Farm	DRAWN BY	JG	DRAWING NO. Figure 12-21-W
	DRAWING TITLE	Appendix 12-6: Representative Viewpoint Photography	CHECKED BY	SG	
	CLIENT	One Earth Solar Ltd	DATE	30/04/2024	REV -






Viewpoint 21      View from public footpath (NT/South Clifton/FP2), west of St George's Church (Summer)

Type: Type 1  
Projection: Cylindrical  
48% @ A3, 96% @ A1  
Camera: Canon EOS 6D MkII  
Lens: Canon 50mm

Looking direction: north west  
HfoV: 90 degrees  
Date captured: 07.03.2024

<div>ICENI PROJECTS LIMITED</div> <div>Da Vinci House 44 Saffron Hill</div> <div>London, ECN1 8FH</div> <div></div>	PROJECT	One Earth Solar Farm	DRAWN BY	JG	DRAWING NO. Figure 12-21-S
	DRAWING TITLE	Appendix 12-6: Representative Viewpoint Photography	CHECKED BY	SG	
	CLIENT	One Earth Solar Ltd	DATE	30/04/2024	REV -






Viewpoint 22      View from public footpath (NT/North Clifton/FP1), south of North Clifton (Winter)

Type: Type 1  
Projection: Cylindrical  
48% @ A3, 96% @ A1  
Camera: Canon EOS 6D MkII  
Lens: Canon 50mm

Looking direction: south  
HfoV: 90 degrees  
Date captured: 07.03.2024

<div>ICENI PROJECTS LIMITED</div> <div>Da Vinci House 44 Saffron Hill</div> <div>London, ECN1 8FH</div> <div></div>	PROJECT	One Earth Solar Farm	DRAWN BY	JG	DRAWING NO.
	DRAWING TITLE	Appendix 12-6: Representative Viewpoint Photography	CHECKED BY	SG	Figure 12-22-W
	CLIENT	One Earth Solar Ltd	DATE	30/04/2024	REV
					-





Viewpoint 22      View from public footpath (NT/North Clifton/FP1), south of North Clifton (Summer)

Type: Type 1  
Projection: Cylindrical  
48% @ A3, 96% @ A1  
Camera: Canon EOS 6D MkII  
Lens: Canon 50mm

Looking direction: south  
HfoV: 90 degrees  
Date captured: 07.03.2024

<div>ICENI PROJECTS LIMITED</div> <div>Da Vinci House 44 Saffron Hill</div> <div>London, ECN1 8FH</div> <div>iceni</div>	PROJECT	One Earth Solar Farm	DRAWN BY	JG	DRAWING NO.
	DRAWING TITLE	Appendix 12-6: Representative Viewpoint Photography	CHECKED BY	SG	Figure 12-22-S
	CLIENT	One Earth Solar Ltd	DATE	30/04/2024	REV
					-






Viewpoint 23      View from public byway open to all traffic (NT/North Clifton/BOAT9), Trent Lane, west of North Clifton (Winter)

Type: Type 1  
Projection: Cylindrical  
48% @ A3, 96% @ A1  
Camera: Canon EOS 6D MkII  
Lens: Canon 50mm

Looking direction: west  
HfoV: 90 degrees  
Date captured: 07.03.2024

<div><div>ICENI PROJECTS LIMITED</div><div>Da Vinci House 44 Saffron Hill</div><div>London, ECN1 8FH</div></div> <div></div>	PROJECT	One Earth Solar Farm	DRAWN BY	JG	DRAWING NO.
	DRAWING TITLE	Appendix 12-6: Representative Viewpoint Photography	CHECKED BY	SG	Figure 12-23-W
	CLIENT	One Earth Solar Ltd	DATE	30/04/2024	REV
					-






Viewpoint 23      View from public byway open to all traffic (NT/North Clifton/BOAT9), Trent Lane, west of North Clifton (Summer)

Type: Type 1  
Projection: Cylindrical  
48% @ A3, 96% @ A1  
Camera: Canon EOS 6D MkII  
Lens: Canon 50mm

Looking direction: west  
HfoV: 90 degrees  
Date captured: 07.03.2024

<div>ICENI PROJECTS LIMITED</div> <div>Da Vinci House 44 Saffron Hill</div> <div>London, ECN1 8FH</div> <div></div>	PROJECT	One Earth Solar Farm	DRAWN BY	JG	DRAWING NO.
	DRAWING TITLE	Appendix 12-6: Representative Viewpoint Photography	CHECKED BY	SG	Figure 12-23-S
	CLIENT	One Earth Solar Ltd	DATE	30/04/2024	REV
					-





Viewpoint 24      View from public footpath (NT/North Clifton/FP4) north of North Clifton (Winter)

Type: Type 1  
Projection: Cylindrical  
48% @ A3, 96% @ A1  
Camera: Canon EOS 6D MkII  
Lens: Canon 50mm

Looking direction: north  
HfoV: 90 degrees  
Date captured: 06.03.2024

<div><div>ICENI PROJECTS LIMITED</div><div>Da Vinci House 44 Saffron Hill</div><div>London, ECN1 8FH</div></div> <div></div>	PROJECT	One Earth Solar Farm	DRAWN BY	JG	DRAWING NO.
	DRAWING TITLE	Appendix 12-6: Representative Viewpoint Photography	CHECKED BY	SG	Figure 12-24-W
	CLIENT	One Earth Solar Ltd	DATE	30/04/2024	REV
					-





Viewpoint 24      View from public footpath (NT/North Clifton/FP4) north of North Clifton (Summer)

Type: Type 1  
Projection: Cylindrical  
48% @ A3, 96% @ A1  
Camera: Canon EOS 6D MkII  
Lens: Canon 50mm

Looking direction: north  
HfoV: 90 degrees  
Date captured: 06.03.2024





Viewpoint 25a Views from Fledborough Viaduct, east of the River Trent (Winter)

Type: Type 1  
Projection: Cylindrical  
48% @ A3, 96% @ A1  
Camera: Canon EOS 6D MkII  
Lens: Canon 50mm

Looking direction: north west  
HfoV: 90 degrees  
Date captured: 06.03.2024

<div><div>ICENI PROJECTS LIMITED</div><div>Da Vinci House 44 Saffron Hill</div><div>London, ECN1 8FH</div></div> <div></div>	PROJECT	One Earth Solar Farm	DRAWN BY	JG	DRAWING NO. Figure 12-25a-W
	DRAWING TITLE	Appendix 12-6: Representative Viewpoint Photography	CHECKED BY	SG	
	CLIENT	One Earth Solar Ltd	DATE	30/04/2024	REV -






Viewpoint 25b Views from Fledborough Viaduct, east of the River Trent (Winter)

Type: Type 1  
Projection: Cylindrical  
48% @ A3, 96% @ A1  
Camera: Canon EOS 6D MkII  
Lens: Canon 50mm

Looking direction: north east  
HfoV: 90 degrees  
Date captured: 06.03.2024

<div><div>ICENI PROJECTS LIMITED</div><div>Da Vinci House 44 Saffron Hill</div><div>London, ECN1 8FH</div></div> <div></div>	PROJECT	One Earth Solar Farm	DRAWN BY	JG	DRAWING NO.
	DRAWING TITLE	Appendix 12-6: Representative Viewpoint Photography	CHECKED BY	SG	Figure 12-25b-W
	CLIENT	One Earth Solar Ltd	DATE	30/04/2024	REV
					-






Viewpoint 25b Views from Fledborough Viaduct, east of the River Trent (Summer)

Type: Type 1  
Projection: Cylindrical  
48% @ A3, 96% @ A1  
Camera: Canon EOS 6D MkII  
Lens: Canon 50mm

Looking direction: north east  
HfoV: 90 degrees  
Date captured: 06.03.2024

<div>ICENI PROJECTS LIMITED</div> <div>Da Vinci House 44 Saffron Hill</div> <div>London, ECN1 8FH</div> <div></div>	PROJECT	One Earth Solar Farm	DRAWN BY JG	DRAWING NO. Figure 12-25b-s
	DRAWING TITLE	Appendix 12-6: Representative Viewpoint Photography	CHECKED BY SG	
	CLIENT	One Earth Solar Ltd	DATE 30/04/2024	REV -





Viewpoint 26a      View from Fledborough Viaduct, west of the River Trent (Winter)

Type: Type 1  
Projection: Cylindrical  
48% @ A3, 96% @ A1  
Camera: Canon EOS 6D MkII  
Lens: Canon 50mm

Looking direction: north west  
HfoV: 90 degrees  
Date captured: 06.03.2024

<div><div>ICENI PROJECTS LIMITED</div><div>Da Vinci House 44 Saffron Hill</div><div>London, ECN1 8FH</div></div> <div></div>	PROJECT	One Earth Solar Farm	DRAWN BY	JG	DRAWING NO.
	DRAWING TITLE	Appendix 12-6: Representative Viewpoint Photography	CHECKED BY	SG	Figure 12-26a-W
	CLIENT	One Earth Solar Ltd	DATE	30/04/2024	REV
					-





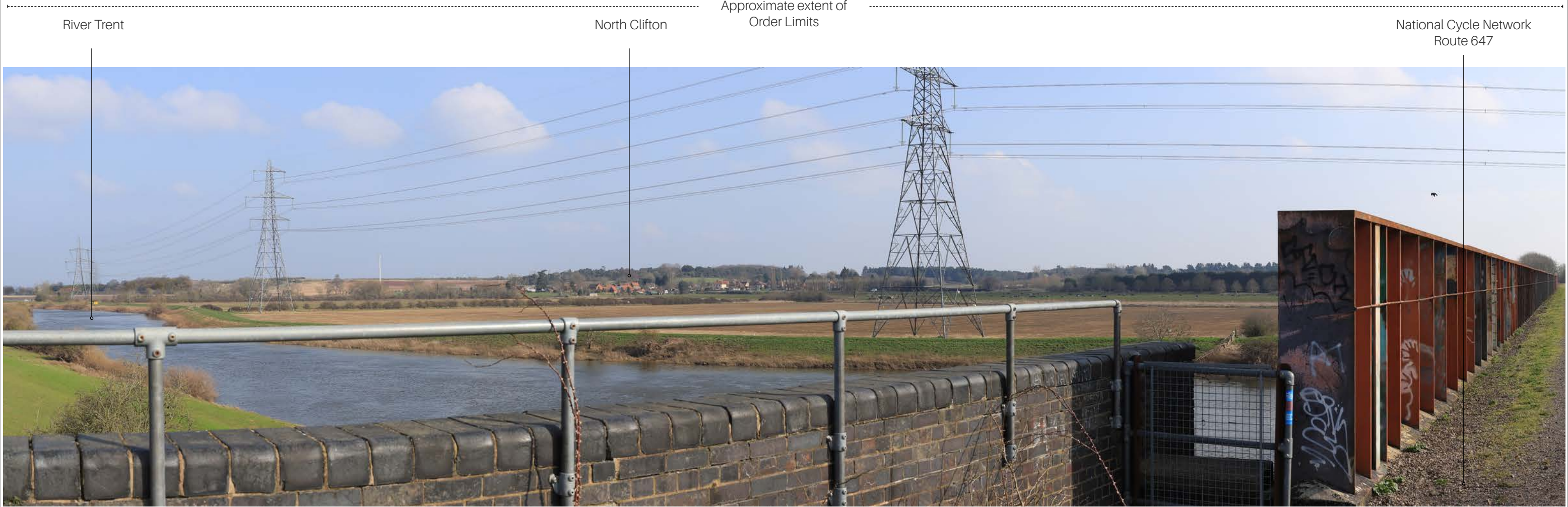
Viewpoint 26a      View from Fledborough Viaduct, west of the River Trent (Summer)

Type: Type 1  
Projection: Cylindrical  
48% @ A3, 96% @ A1  
Camera: Canon EOS 6D MkII  
Lens: Canon 50mm

Looking direction: north west  
HfoV: 90 degrees  
Date captured: 06.03.2024

<div><div>ICENI PROJECTS LIMITED</div><div>Da Vinci House 44 Saffron Hill</div><div>London, ECN1 8FH</div></div> <div></div>	PROJECT	One Earth Solar Farm	DRAWN BY	JG	DRAWING NO.
	DRAWING TITLE	Appendix 12-6: Representative Viewpoint Photography	CHECKED BY	SG	Figure 12-26a-S
	CLIENT	One Earth Solar Ltd	DATE	30/04/2024	REV
					-






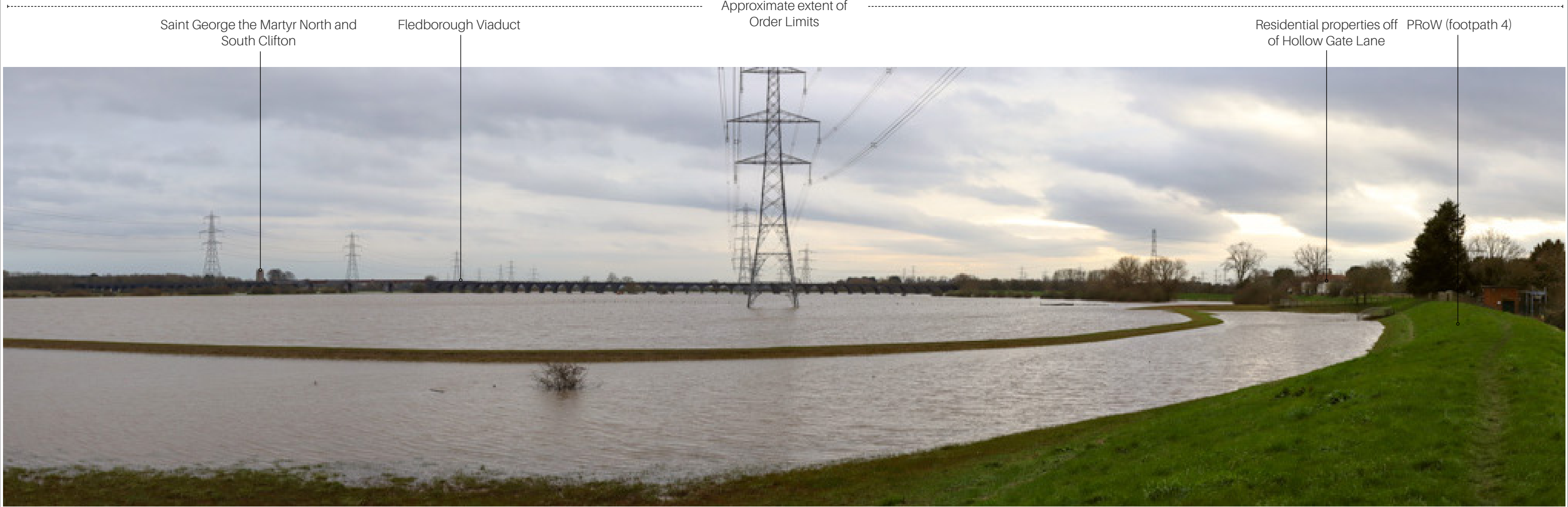
Viewpoint 26b      View from Fledborough Viaduct, west of the River Trent (Winter)

Type: Type 1  
Projection: Cylindrical  
48% @ A3, 96% @ A1  
Camera: Canon EOS 6D MkII  
Lens: Canon 50mm

Looking direction: north east  
HfoV: 90 degrees  
Date captured: 06.03.2024

<div>ICENI PROJECTS LIMITED</div> <div>Da Vinci House 44 Saffron Hill</div> <div>London, ECN1 8FH</div> <div></div>	PROJECT	One Earth Solar Farm	DRAWN BY	JG	DRAWING NO.
	DRAWING TITLE	Appendix 12-6: Representative Viewpoint Photography	CHECKED BY	SG	Figure 12-26b-W
	CLIENT	One Earth Solar Ltd	DATE	30/04/2024	REV
					-





Viewpoint 27a

Views from public footpath (NT/Fledborough/FP11), west of the River Trent (Winter)

Type: Type 1  
Projection: Cylindrical  
48% @ A3, 96% @ A1  
Camera: Canon EOS 6D MkII  
Lens: Canon 50mm

Looking direction: south  
HfoV: 90 degrees  
Date captured: 06.03.2024





Viewpoint 27a Views from public footpath (NT/Fledborough/FP11), west of the River Trent (Summer)

Type: Type 1  
Projection: Cylindrical  
48% @ A3, 96% @ A1  
Camera: Canon EOS 6D MkII  
Lens: Canon 50mm

Looking direction: south  
HfoV: 90 degrees  
Date captured: 06.03.2024

<div>ICENI PROJECTS LIMITED</div> <div>Da Vinci House 44 Saffron Hill</div> <div>London, ECN1 8FH</div> <div>iceni</div>	PROJECT	One Earth Solar Farm	DRAWN BY	JG	DRAWING NO.
	DRAWING TITLE	Appendix 12-6: Representative Viewpoint Photography	CHECKED BY	SG	Figure 12-27a-S
	CLIENT	One Earth Solar Ltd	DATE	30/04/2024	REV
					-





Viewpoint 27b

Views from public footpath (NT/Fledborough/FP11), west of the River Trent (Winter)

Type: Type 1  
Projection: Cylindrical  
48% @ A3, 96% @ A1  
Camera: Canon EOS 6D MkII  
Lens: Canon 50mm

Looking direction: south west  
HfoV: 90 degrees  
Date captured: 06.03.2024

<div><div>ICENI PROJECTS LIMITED</div><div>Da Vinci House 44 Saffron Hill</div><div>London, ECN1 8FH</div></div> <div></div>	PROJECT	One Earth Solar Farm	DRAWN BY	JG	DRAWING NO.
	DRAWING TITLE	Appendix 12-6: Representative Viewpoint Photography	CHECKED BY	SG	Figure 12-27b-W
	CLIENT	One Earth Solar Ltd	DATE	30/04/2024	REV
					-





Viewpoint 27b

Views from public footpath (NT/Fledborough/FP11), west of the River Trent (Summer)

Type: Type 1  
Projection: Cylindrical  
48% @ A3, 96% @ A1  
Camera: Canon EOS 6D MkII  
Lens: Canon 50mm

Looking direction: south west  
HfoV: 90 degrees  
Date captured: 06.03.2024

<div><div>ICENI PROJECTS LIMITED</div><div>Da Vinci House 44 Saffron Hill</div><div>London, ECN1 8FH</div></div> <div></div>	PROJECT	One Earth Solar Farm	DRAWN BY	JG	DRAWING NO.
	DRAWING TITLE	Appendix 12-6: Representative Viewpoint Photography	CHECKED BY	SG	Figure 12-27b-s
	CLIENT	One Earth Solar Ltd	DATE	30/04/2024	REV






Viewpoint 28a Views from public footpath (NT/Fledborough/FP10), north of Fledborough (Winter)

Type: Type 1  
Projection: Cylindrical  
48% @ A3, 96% @ A1  
Camera: Canon EOS 6D MkII  
Lens: Canon 50mm

Looking direction: south  
HfoV: 90 degrees  
Date captured: 06.03.2024

<div>ICENI PROJECTS LIMITED</div> <div>Da Vinci House 44 Saffron Hill</div> <div>London, ECN1 8FH</div> <div></div>	PROJECT	One Earth Solar Farm	DRAWN BY	JG	DRAWING NO.
	DRAWING TITLE	Appendix 12-6: Representative Viewpoint Photography	CHECKED BY	SG	Figure 12-28a-W
	CLIENT	One Earth Solar Ltd	DATE	30/04/2024	REV
					-





Viewpoint 28a

Views from public footpath (NT/Fledborough/FP10), north of Fledborough (Summer)

Type: Type 1  
Projection: Cylindrical  
48% @ A3, 96% @ A1  
Camera: Canon EOS 6D MkII  
Lens: Canon 50mm

Looking direction: south  
HfoV: 90 degrees  
Date captured: 06.03.2024

<div><div>ICENI PROJECTS LIMITED</div><div>Da Vinci House 44 Saffron Hill</div><div>London, ECN1 8FH</div></div> <div></div>	PROJECT	One Earth Solar Farm	DRAWN BY	JG	DRAWING NO.
	DRAWING TITLE	Appendix 12-6: Representative Viewpoint Photography	CHECKED BY	SG	Figure 12-28a-S
	CLIENT	One Earth Solar Ltd	DATE	30/04/2024	REV
					-






Viewpoint 28b      Views from public footpath (NT/Fledborough/FP10), north of Fledborough (Winter)

Type: Type 1  
Projection: Cylindrical  
48% @ A3, 96% @ A1  
Camera: Canon EOS 6D MkII  
Lens: Canon 50mm

Looking direction: east  
HfoV: 90 degrees  
Date captured: 06.03.2024

<div><div>ICENI PROJECTS LIMITED</div><div>Da Vinci House 44 Saffron Hill</div><div>London, ECN1 8FH</div></div> <div></div>	PROJECT	One Earth Solar Farm	DRAWN BY	JG	DRAWING NO.
	DRAWING TITLE	Appendix 12-6: Representative Viewpoint Photography	CHECKED BY	SG	Figure 12-28b-W
	CLIENT	One Earth Solar Ltd	DATE	30/04/2024	REV
					-



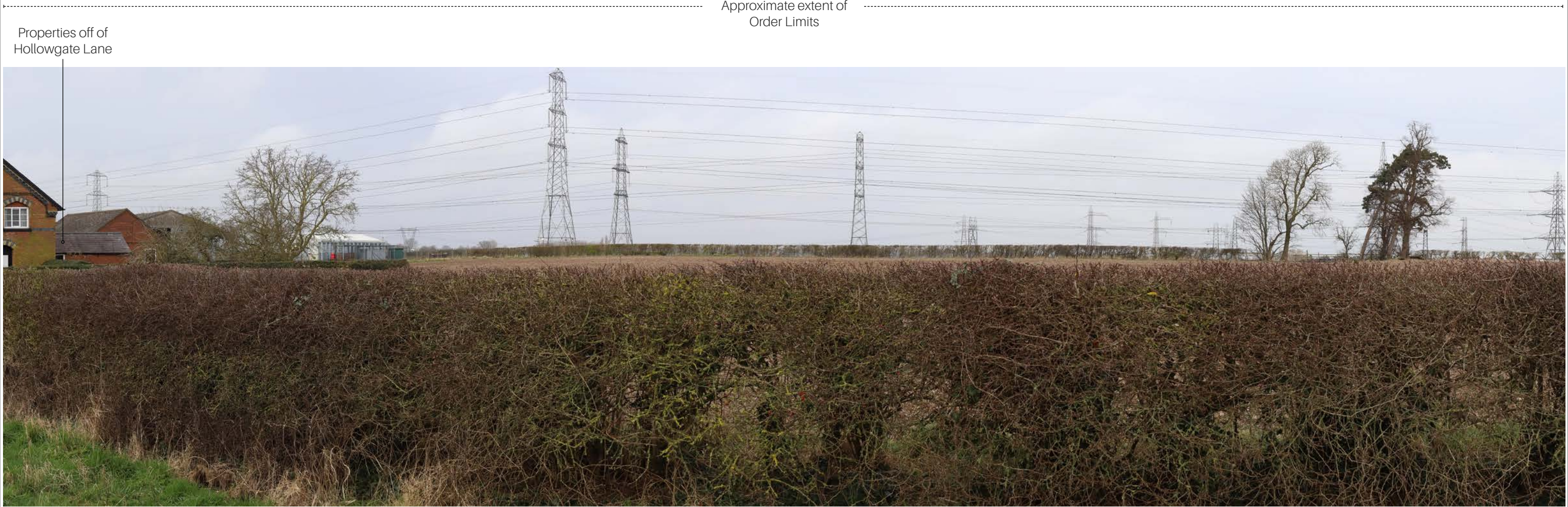


Viewpoint 28b Views from public footpath (NT/Fledborough/FP10) north of Fledborough (Summer)

Type: Type 1  
Projection: Cylindrical  
48% @ A3, 96% @ A1  
Camera: Canon EOS 6D MkII  
Lens: Canon 50mm  
Looking direction: east  
HfoV: 90 degrees  
Date captured: 06.03.2024

<div><div>ICENI PROJECTS LIMITED</div><div>Da Vinci House 44 Saffron Hill</div><div>London, ECN1 8FH</div></div> <div></div>	PROJECT	One Earth Solar Farm	DRAWN BY	JG	DRAWING NO.
	DRAWING TITLE	Appendix 12-6: Representative Viewpoint Photography	CHECKED BY	SG	Figure 12-28b-s
	CLIENT	One Earth Solar Ltd	DATE	30/04/2024	REV





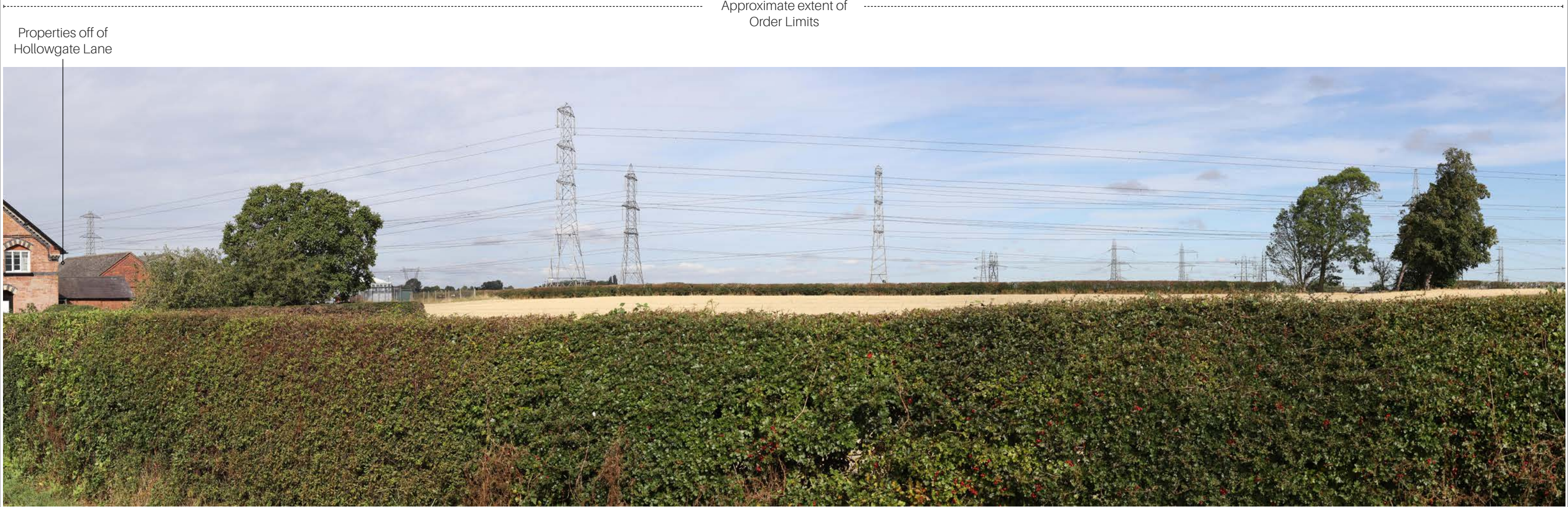
Viewpoint 29      View from Hollowgate Lane, High Marnham (Winter)

Type: Type 1  
Projection: Cylindrical  
48% @ A3, 96% @ A1  
Camera: Canon EOS 6D MkII  
Lens: Canon 50mm

Looking direction: north  
HfoV: 90 degrees  
Date captured: 06.03.2024

<div>ICENI PROJECTS LIMITED</div> <div>Da Vinci House 44 Saffron Hill</div> <div>London, ECN1 8FH</div> <div></div>	PROJECT	One Earth Solar Farm	DRAWN BY	JG	DRAWING NO.
	DRAWING TITLE	Appendix 12-6: Representative Viewpoint Photography	CHECKED BY	SG	Figure 12-29-W
	CLIENT	One Earth Solar Ltd	DATE	30/04/2024	REV
					-





Viewpoint 29View from Hollowgate Lane, High Marnham (Summer)

Type: Type 1  
Projection: Cylindrical  
48% @ A3, 96% @ A1  
Camera: Canon EOS 6D MkII  
Lens: Canon 50mm

Looking direction: north  
HfoV: 90 degrees  
Date captured: 06.03.2024

<div>ICENI PROJECTS LIMITED</div> <div>Da Vinci House 44 Saffron Hill</div> <div>London, ECN1 8FH</div> <div></div>	PROJECT	One Earth Solar Farm	DRAWN BY	JG	DRAWING NO.
	DRAWING TITLE	Appendix 12-6: Representative Viewpoint Photography	CHECKED BY	SG	Figure 12-29-S
	CLIENT	One Earth Solar Ltd	DATE	30/04/2024	REV
					-



Agricultural buildings in  
Low Marnham

Approximate extent of  
Order Limits




Viewpoint 30

View from public footpath (NT/Marnham/FP2), Low Marnham (Winter)

Type: Type 1  
Projection: Cylindrical  
48% @ A3, 96% @ A1  
Camera: Canon EOS 6D MkII  
Lens: Canon 50mm

Looking direction: north west  
HfoV: 90 degrees  
Date captured: 06.03.2024

<div><b>ICENI PROJECTS LIMITED</b> Da Vinci House 44 Saffron Hill London, ECN1 8FH</div> <div></div>	PROJECT	One Earth Solar Farm	DRAWN BY	JG	DRAWING NO. Figure 12-30-W
	DRAWING TITLE	Appendix 12-6: Representative Viewpoint Photography	CHECKED BY	SG	
	CLIENT	One Earth Solar Ltd	DATE	30/04/2024	REV -



Agricultural buildings in  
Low Marnham


Approximate extent of  
Order Limits



Viewpoint 30      View from public footpath (NT/Marnham/FP2), Low Marnham (Summer)

Type: Type 1  
Projection: Cylindrical  
48% @ A3, 96% @ A1  
Camera: Canon EOS 6D MkII  
Lens: Canon 50mm

Looking direction: north west  
HfoV: 90 degrees  
Date captured: 06.03.2024

<div>ICENI PROJECTS LIMITED</div> <div>Da Vinci House 44 Saffron Hill</div> <div>London, ECN1 8FH</div> <div></div>	PROJECT	One Earth Solar Farm	DRAWN BY	JG	DRAWING NO.
	DRAWING TITLE	Appendix 12-6: Representative Viewpoint Photography	CHECKED BY	SG	Figure 12-30-S
	CLIENT	One Earth Solar Ltd	DATE	30/04/2024	REV
					-






Viewpoint 31      View from public footpath (NT/Normanton-On-Trent/FP8), north-east of Normanton on Trent (Winter)

Type: Type 1  
Projection: Cylindrical  
48% @ A3, 96% @ A1  
Camera: Canon EOS 6D MkII  
Lens: Canon 50mm

Looking direction: north  
HfoV: 90 degrees  
Date captured: 06.03.2024

<div>ICENI PROJECTS LIMITED</div> <div>Da Vinci House 44 Saffron Hill</div> <div>London, ECN1 8FH</div> <div></div>	PROJECT	One Earth Solar Farm	DRAWN BY	JG	DRAWING NO.
	DRAWING TITLE	Appendix 12-6: Representative Viewpoint Photography	CHECKED BY	SG	Figure 12-31-W
	CLIENT	One Earth Solar Ltd	DATE	30/04/2024	REV
					-






Viewpoint 31      View from public footpath (NT/Normanton-On-Trent/FP8), north-east of Normanton on Trent (Summer)

Type: Type 1  
Projection: Cylindrical  
48% @ A3, 96% @ A1  
Camera: Canon EOS 6D MkII  
Lens: Canon 50mm

Looking direction: north  
HfoV: 90 degrees  
Date captured: 06.03.2024

<div>ICENI PROJECTS LIMITED</div> <div>Da Vinci House 44 Saffron Hill</div> <div>London, ECN1 8FH</div> <div></div>	PROJECT	One Earth Solar Farm	DRAWN BY	JG	DRAWING NO.
	DRAWING TITLE	Appendix 12-6: Representative Viewpoint Photography	CHECKED BY	SG	Figure 12-31-S
	CLIENT	One Earth Solar Ltd	DATE	30/04/2024	REV
					-






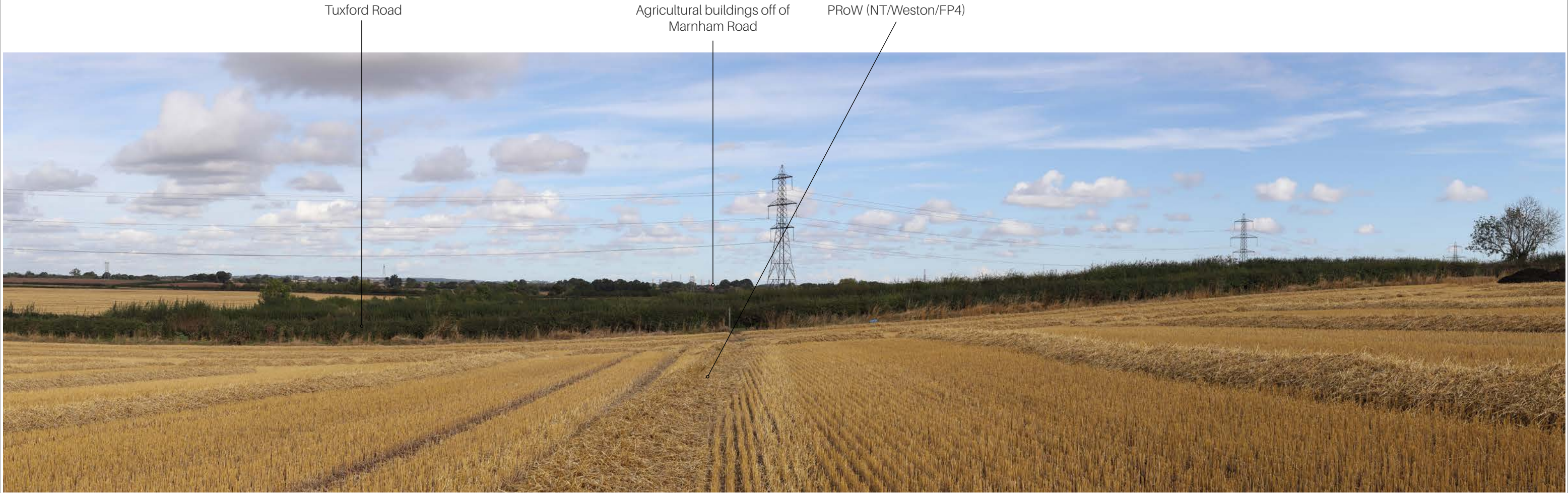
Viewpoint 32      View from public footpath (NT/Weston/FP4), south of Tuxford Road (Winter)

Type: Type 1  
Projection: Cylindrical  
48% @ A3, 96% @ A1  
Camera: Canon EOS 6D MkII  
Lens: Canon 50mm

Looking direction: north  
HfoV: 90 degrees  
Date captured: 06.03.2024

<div>ICENI PROJECTS LIMITED</div> <div>Da Vinci House 44 Saffron Hill</div> <div>London, ECN1 8FH</div> <div></div>	PROJECT	One Earth Solar Farm	DRAWN BY	JG	DRAWING NO.
	DRAWING TITLE	Appendix 12-6: Representative Viewpoint Photography	CHECKED BY	SG	Figure 12-32-W
	CLIENT	One Earth Solar Ltd	DATE	30/04/2024	REV
					-






Viewpoint 32      View from public footpath (NT/Weston/FP4), south of Tuxford Road (Summer)

Type: Type 1  
Projection: Cylindrical  
48% @ A3, 96% @ A1  
Camera: Canon EOS 6D MkII  
Lens: Canon 50mm

Looking direction: north  
HfoV: 90 degrees  
Date captured: 06.03.2024

<div>ICENI PROJECTS LIMITED</div> <div>Da Vinci House 44 Saffron Hill</div> <div>London, ECN1 8FH</div> <div></div>	PROJECT	One Earth Solar Farm	DRAWN BY	JG	DRAWING NO.
	DRAWING TITLE	Appendix 12-6: Representative Viewpoint Photography	CHECKED BY	SG	Figure 12-32-S
	CLIENT	One Earth Solar Ltd	DATE	30/04/2024	REV
					-






Viewpoint 33      View from Tuxford Road (Winter)

Type: Type 1  
Projection: Cylindrical  
48% @ A3, 96% @ A1  
Camera: Canon EOS 6D MkII  
Lens: Canon 50mm

Looking direction: east  
HfoV: 90 degrees  
Date captured: 06.03.2024

<div><b>ICENI PROJECTS LIMITED</b> Da Vinci House 44 Saffron Hill London, ECN1 8FH</div> <div></div>	PROJECT	One Earth Solar Farm	DRAWN BY	JG	DRAWING NO.
	DRAWING TITLE	Appendix 12-6: Representative Viewpoint Photography	CHECKED BY	SG	Figure 12-33-W
	CLIENT	One Earth Solar Ltd	DATE	30/04/2024	REV
					-





Approximate extent of  
Order Limits


Tuxford Road

Viewpoint 33

View from Tuxford Road (Summer)

Type: Type 1  
Projection: Cylindrical  
48% @ A3, 96% @ A1  
Camera: Canon EOS 6D MkII  
Lens: Canon 50mm

Looking direction: east  
HfoV: 90 degrees  
Date captured: 06.03.2024

<div>ICENI PROJECTS LIMITED</div> <div>Da Vinci House 44 Saffron Hill</div> <div>London, ECN1 8FH</div> <div></div>	PROJECT	One Earth Solar Farm	DRAWN BY	JG	DRAWING NO.
	DRAWING TITLE	Appendix 12-6: Representative Viewpoint Photography	CHECKED BY	SG	Figure 12-33-S
	CLIENT	One Earth Solar Ltd	DATE	30/04/2024	REV
					-





Viewpoint 34a

View from National Cycle Network (Route 647) (Winter)

Type: Type 1  
Projection: Cylindrical  
48% @ A3, 96% @ A1  
Camera: Canon EOS 6D MkII  
Lens: Canon 50mm

Looking direction: east  
HfoV: 90 degrees  
Date captured: 06.03.2024



A wide-angle photograph of a gravel path leading through a wooded area. The path is made of dark gravel and runs straight towards the horizon. On the left side of the path, there is a dense thicket of green bushes and tall, dry grasses. On the right side, there are large, leafy trees and more tall grasses. The sky is overcast and grey. The overall scene is a natural, somewhat overgrown landscape.

Viewpoint 34a

Type: Type 1  
Projection: Cylindrical  
48% @ A3, 96% @ A1  
Camera: Canon EOS 6D MkII  
Lens: Canon 50mm

Looking direction: east  
HfoV: 90 degrees  
Date captured: 06.03.2024






Viewpoint 34b      View north on Fledborough Road

Type: Type 1  
Projection: Cylindrical  
48% @ A3, 96% @ A1  
Camera: Canon EOS 6D MkII  
Lens: Canon 50mm

Looking direction: north  
HfoV: 90 degrees  
Date captured: 06.03.2024

<div>ICENI PROJECTS LIMITED</div> <div>Da Vinci House 44 Saffron Hill</div> <div>London, ECN1 8FH</div> <div></div>	PROJECT	One Earth Solar Farm	DRAWN BY	JG	DRAWING NO.
	DRAWING TITLE	Appendix 12-6: Representative Viewpoint Photography	CHECKED BY	SG	Figure 12-34b-W
	CLIENT	One Earth Solar Ltd	DATE	30/04/2024	REV
					-





Viewpoint 34b      View north on Fledborough Road

Type: Type 1  
Projection: Cylindrical  
48% @ A3, 96% @ A1  
Camera: Canon EOS 6D MkII  
Lens: Canon 50mm

Looking direction: north  
HfoV: 90 degrees  
Date captured: 06.03.2024

<div><div>ICENI PROJECTS LIMITED</div><div>Da Vinci House 44 Saffron Hill</div><div>London, ECN1 8FH</div></div> <div></div>	PROJECT	One Earth Solar Farm	DRAWN BY	JG	DRAWING NO.
	DRAWING TITLE	Appendix 12-6: Representative Viewpoint Photography	CHECKED BY	SG	Figure 12-34b-S
	CLIENT	One Earth Solar Ltd	DATE	30/04/2024	REV






Viewpoint 35      View from Skegby Road (Winter)

Type: Type 1  
Projection: Cylindrical  
48% @ A3, 96% @ A1  
Camera: Canon EOS 6D MkII  
Lens: Canon 50mm

Looking direction: east  
HfoV: 90 degrees  
Date captured: 06.03.2024

<div><div>ICENI PROJECTS LIMITED</div><div>Da Vinci House 44 Saffron Hill</div><div>London, ECN1 8FH</div></div> <div></div>	PROJECT	One Earth Solar Farm	DRAWN BY	JG	DRAWING NO.
	DRAWING TITLE	Appendix 12-6: Representative Viewpoint Photography	CHECKED BY	SG	Figure 12-35-W
	CLIENT	One Earth Solar Ltd	DATE	30/04/2024	REV
					-






JG Pears Newark

Viewpoint 35      View from Skegby Road (Summer)

Type: Type 1  
Projection: Cylindrical  
48% @ A3, 96% @ A1  
Camera: Canon EOS 6D MkII  
Lens: Canon 50mm

Looking direction: east  
HfoV: 90 degrees  
Date captured: 06.03.2024

<div>ICENI PROJECTS LIMITED</div> <div>Da Vinci House 44 Saffron Hill</div> <div>London, ECN1 8FH</div> <div></div>	PROJECT	One Earth Solar Farm	DRAWN BY	JG	DRAWING NO.
	DRAWING TITLE	Appendix 12-6: Representative Viewpoint Photography	CHECKED BY	SG	Figure 12-35-S
	CLIENT	One Earth Solar Ltd	DATE	30/04/2024	REV
					-





Viewpoint 36a      View from public bridleway (NT/Darlington/BW4) (Winter)

Type: Type 1  
Projection: Cylindrical  
48% @ A3, 96% @ A1  
Camera: Canon EOS 6D MkII  
Lens: Canon 50mm

Looking direction: north east  
HfoV: 90 degrees  
Date captured: 12.03.2024

<div>ICENI PROJECTS LIMITED</div> <div>Da Vinci House 44 Saffron Hill</div> <div>London, ECN1 8FH</div> <div>iceni</div>	PROJECT	One Earth Solar Farm	DRAWN BY	JG	DRAWING NO.
	DRAWING TITLE	Appendix 12-6: Representative Viewpoint Photography	CHECKED BY	SG	Figure 12-36a-W
	CLIENT	One Earth Solar Ltd	DATE	30/04/2024	REV
					-



Lodge Farm


Approximate extent of  
Order Limits



Viewpoint 36a      View from public bridleway (NT/Darlington/BW4) (Summer)

Type: Type 1  
Projection: Cylindrical  
48% @ A3, 96% @ A1  
Camera: Canon EOS 6D MkII  
Lens: Canon 50mm

Looking direction: north east  
HfoV: 90 degrees  
Date captured: 12.03.2024

<div><div>ICENI PROJECTS LIMITED</div><div>Da Vinci House 44 Saffron Hill</div><div>London, ECN1 8FH</div></div> <div></div>	PROJECT	One Earth Solar Farm	DRAWN BY	JG	DRAWING NO.
	DRAWING TITLE	Appendix 12-6: Representative Viewpoint Photography	CHECKED BY	SG	Figure 12-36a-S
	CLIENT	One Earth Solar Ltd	DATE	30/04/2024	REV
					-






Approximate extent of Order Limits

JG Pears Newark

Viewpoint 36b      View from public bridleway (NT/Darlington/BW4) (Winter)

Type: Type 1  
Projection: Cylindrical  
48% @ A3, 96% @ A1  
Camera: Canon EOS 6D MkII  
Lens: Canon 50mm

Looking direction: south east  
HfoV: 90 degrees  
Date captured: 12.03.2024

<div><div>ICENI PROJECTS LIMITED</div><div>Da Vinci House 44 Saffron Hill</div><div>London, ECN1 8FH</div></div> <div></div>	PROJECT	One Earth Solar Farm	DRAWN BY	JG	DRAWING NO.
	DRAWING TITLE	Appendix 12-6: Representative Viewpoint Photography	CHECKED BY	SG	Figure 12-36b-W
	CLIENT	One Earth Solar Ltd	DATE	30/04/2024	REV






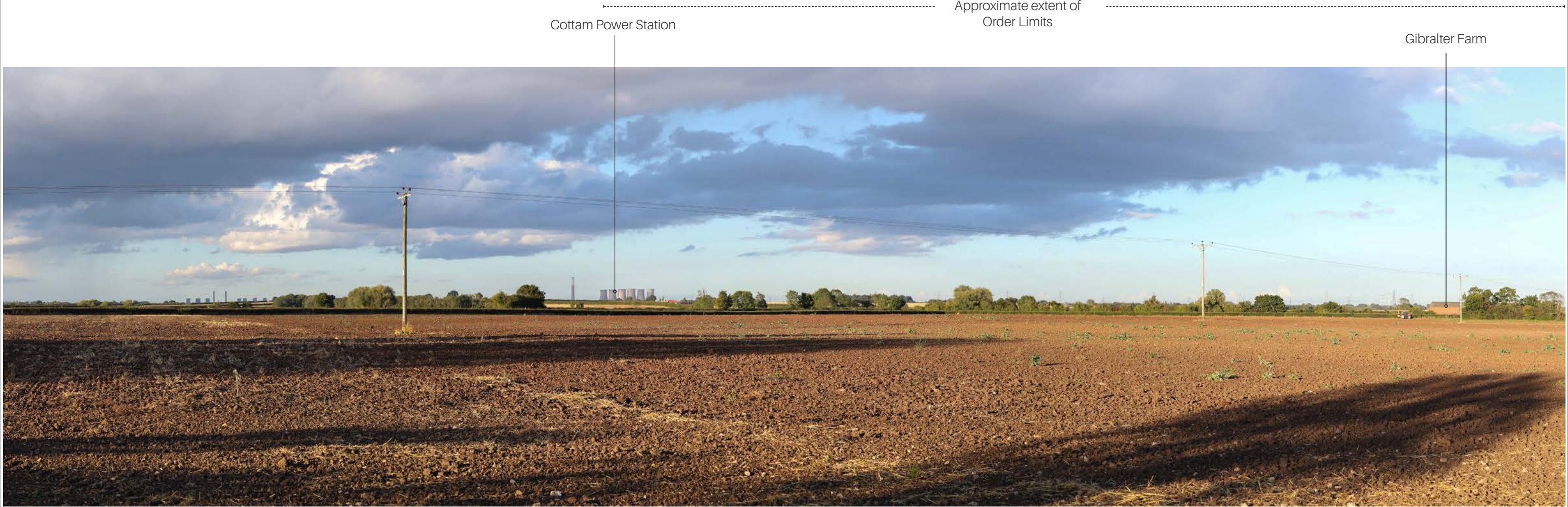
Viewpoint 37      View from public footpath (NT/Fledborough/FP5), north east of Wells Farm (Winter)

Type: Type 1  
Projection: Cylindrical  
48% @ A3, 96% @ A1  
Camera: Canon EOS 6D MkII  
Lens: Canon 50mm

Looking direction: north east  
HfoV: 90 degrees  
Date captured: 05.03.2024

<div>ICENI PROJECTS LIMITED</div> <div>Da Vinci House 44 Saffron Hill</div> <div>London, ECN1 8FH</div> <div></div>	PROJECT	One Earth Solar Farm	DRAWN BY	JG	DRAWING NO.
	DRAWING TITLE	Appendix 12-6: Representative Viewpoint Photography	CHECKED BY	SG	Figure 12-37-W
	CLIENT	One Earth Solar Ltd	DATE	30/04/2024	REV
					-






Viewpoint 37      View from public footpath (NT/Fledborough/FP5), north east of Wells Farm (Summer)

Type: Type 1  
Projection: Cylindrical  
48% @ A3, 96% @ A1  
Camera: Canon EOS 6D MkII  
Lens: Canon 50mm

Looking direction: north east  
HfoV: 90 degrees  
Date captured: 05.03.2024

<div><div>ICENI PROJECTS LIMITED</div><div>Da Vinci House 44 Saffron Hill</div><div>London, ECN1 8FH</div></div> <div></div>	PROJECT	One Earth Solar Farm	DRAWN BY	JG	DRAWING NO.
	DRAWING TITLE	Appendix 12-6: Representative Viewpoint Photography	CHECKED BY	SG	Figure 12-37-S
	CLIENT	One Earth Solar Ltd	DATE	30/04/2024	REV



PRoW (NT/Fledborough/FP7)

Approximate extent of  
Order Limits




Viewpoint 38a

View from public footpath (NT/Fledborough/FP7) (Winter)

Type: Type 1  
Projection: Cylindrical  
48% @ A3, 96% @ A1  
Camera: Canon EOS 6D MkII  
Lens: Canon 50mm

Looking direction: north west  
HfoV: 90 degrees  
Date captured: 05.03.2024

<div><div>ICENI PROJECTS LIMITED</div><div>Da Vinci House 44 Saffron Hill</div><div>London, ECN1 8FH</div></div> <div></div>	PROJECT	One Earth Solar Farm	DRAWN BY	JG	DRAWING NO.
	DRAWING TITLE	Appendix 12-6: Representative Viewpoint Photography	CHECKED BY	SG	Figure 12-38a-W
	CLIENT	One Earth Solar Ltd	DATE	30/04/2024	REV
					-






Viewpoint 38b      View from public footpath (NT/Fledborough/FP7) (Winter)

Type: Type 1  
Projection: Cylindrical  
48% @ A3, 96% @ A1  
Camera: Canon EOS 6D MkII  
Lens: Canon 50mm

Looking direction: north east  
HfoV: 90 degrees  
Date captured: 05.03.2024

<div><b>ICENI PROJECTS LIMITED</b> Da Vinci House 44 Saffron Hill London, ECN1 8FH</div> <div></div>	PROJECT	One Earth Solar Farm	DRAWN BY	JG	DRAWING NO. Figure 12-38b-W
	DRAWING TITLE	Appendix 12-6: Representative Viewpoint Photography	CHECKED BY	SG	
	CLIENT	One Earth Solar Ltd	DATE	30/04/2024	REV -





Viewpoint 39      View from Main Street, Fledborough (Winter)

Type: Type 1  
Projection: Cylindrical  
48% @ A3, 96% @ A1  
Camera: Canon EOS 6D MkII  
Lens: Canon 50mm

Looking direction: north east  
HfoV: 90 degrees  
Date captured: 05.03.2024

<div><div>ICENI PROJECTS LIMITED</div><div>Da Vinci House 44 Saffron Hill</div><div>London, ECN1 8FH</div></div> <div></div>	PROJECT	One Earth Solar Farm	DRAWN BY	JG	DRAWING NO.
	DRAWING TITLE	Appendix 12-6: Representative Viewpoint Photography	CHECKED BY	SG	Figure 12-39-W
	CLIENT	One Earth Solar Ltd	DATE	30/04/2024	REV
					-






Viewpoint 39      View from Main Street, Fledborough (Summer)

Type: Type 1  
Projection: Cylindrical  
48% @ A3, 96% @ A1  
Camera: Canon EOS 6D MkII  
Lens: Canon 50mm

Looking direction: north east  
HfoV: 90 degrees  
Date captured: 05.03.2024

<div>ICENI PROJECTS LIMITED</div> <div>Da Vinci House 44 Saffron Hill</div> <div>London, ECN1 8FH</div> <div></div>	PROJECT	One Earth Solar Farm	DRAWN BY	JG	DRAWING NO.
	DRAWING TITLE	Appendix 12-6: Representative Viewpoint Photography	CHECKED BY	SG	Figure 12-39-S
	CLIENT	One Earth Solar Ltd	DATE	30/04/2024	REV
					-





Viewpoint 40a

View from Hollow Gate Lane, Fledborough (Winter)

Type: Type 1  
Projection: Cylindrical  
48% @ A3, 96% @ A1  
Camera: Canon EOS 6D MkII  
Lens: Canon 50mm

Looking direction: east  
HfoV: 90 degrees  
Date captured: 05.03.2024

<div><div>ICENI PROJECTS LIMITED</div><div>Da Vinci House 44 Saffron Hill</div><div>London, ECN1 8FH</div></div> <div></div>	PROJECT	One Earth Solar Farm	DRAWN BY	JG	DRAWING NO.
	DRAWING TITLE	Appendix 12-6: Representative Viewpoint Photography	CHECKED BY	SG	Figure 12-40a-W
	CLIENT	One Earth Solar Ltd	DATE	30/04/2024	REV
					-





Viewpoint 40a      View from Hollow Gate Lane, Fledborough (Summer)

Type: Type 1  
Projection: Cylindrical  
48% @ A3, 96% @ A1  
Camera: Canon EOS 6D MkII  
Lens: Canon 50mm

Looking direction: east  
HfoV: 90 degrees  
Date captured: 05.03.2024

<div><div>ICENI PROJECTS LIMITED</div><div>Da Vinci House 44 Saffron Hill</div><div>London, ECN1 8FH</div></div> <div></div>	PROJECT	One Earth Solar Farm	DRAWN BY	JG	DRAWING NO.
	DRAWING TITLE	Appendix 12-6: Representative Viewpoint Photography	CHECKED BY	SG	Figure 12-40a-S
	CLIENT	One Earth Solar Ltd	DATE	30/04/2024	REV
					-





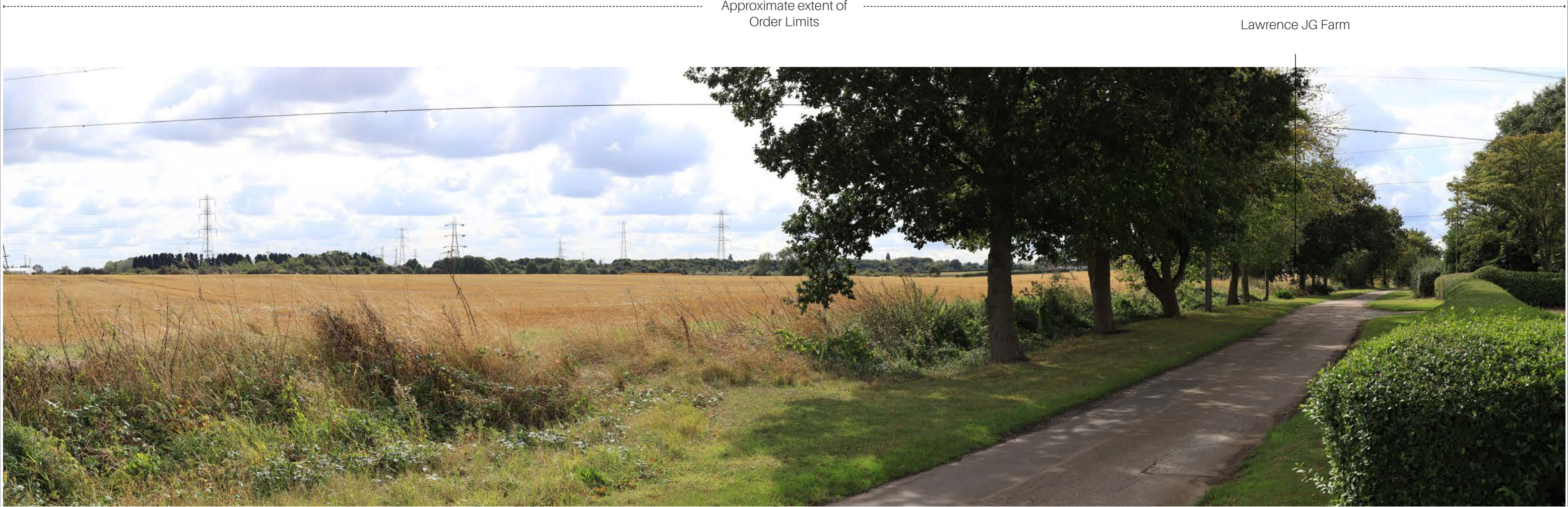
Viewpoint 40b      View from Hollow Gate Lane, Fledborough (Winter)

Type: Type 1  
Projection: Cylindrical  
48% @ A3, 96% @ A1  
Camera: Canon EOS 6D MkII  
Lens: Canon 50mm

Looking direction: south  
HfoV: 90 degrees  
Date captured: 05.03.2024

<div>ICENI PROJECTS LIMITED</div> <div>Da Vinci House 44 Saffron Hill</div> <div>London, EC1N 8FH</div> <div>iceni</div>	PROJECT	One Earth Solar Farm	DRAWN BY	JG	DRAWING NO.
	DRAWING TITLE	Appendix 12-6: Representative Viewpoint Photography	CHECKED BY	SG	Figure 12-40b-W
	CLIENT	One Earth Solar Ltd	DATE	30/04/2024	REV
					-





Viewpoint 40b      View from Hollow Gate Lane, Fledborough (Summer)

Type: Type 1  
Projection: Cylindrical  
48% @ A3, 96% @ A1  
Camera: Canon EOS 6D MkII  
Lens: Canon 50mm

Looking direction: south  
HfoV: 90 degrees  
Date captured: 05.03.2024

<div>ICENI PROJECTS LIMITED</div> <div>Da Vinci House 44 Saffron Hill</div> <div>London, ECN1 8FH</div> <div></div>	PROJECT	One Earth Solar Farm	DRAWN BY	JG	DRAWING NO.
	DRAWING TITLE	Appendix 12-6: Representative Viewpoint Photography	CHECKED BY	SG	Figure 12-40b-s
	CLIENT	One Earth Solar Ltd	DATE	30/04/2024	REV
					-





Viewpoint 41      View from public bridleway (NT/Darlington/BW1) (Winter)

Type: Type 1  
Projection: Cylindrical  
48% @ A3, 96% @ A1  
Camera: Canon EOS 6D MkII  
Lens: Canon 50mm

Looking direction: north  
HfoV: 90 degrees  
Date captured: 06.03.2024

<div><div>ICENI PROJECTS LIMITED</div><div>Da Vinci House 44 Saffron Hill</div><div>London, ECN1 8FH</div></div> <div></div>	PROJECT	One Earth Solar Farm	DRAWN BY	JG	DRAWING NO.
	DRAWING TITLE	Appendix 12-6: Representative Viewpoint Photography	CHECKED BY	SG	Figure 12-41-W
	CLIENT	One Earth Solar Ltd	DATE	30/04/2024	REV
					-





Viewpoint 41

View from public bridleway (NT/Darlington/BW1) (Summer)

Type: Type 1  
Projection: Cylindrical  
48% @ A3, 96% @ A1  
Camera: Canon EOS 6D MkII  
Lens: Canon 50mm

Looking direction: north  
HfoV: 90 degrees  
Date captured: 06.03.2024





Viewpoint 42a      View from public footpath (NT/Ragnall/FP2), (Winter)

Type: Type 1  
Projection: Cylindrical  
48% @ A3, 96% @ A1  
Camera: Canon EOS 6D MkII  
Lens: Canon 50mm

Looking direction: north  
HfoV: 90 degrees  
Date captured: 06.03.2024

<div><b>ICENI PROJECTS LIMITED</b> Da Vinci House 44 Saffron Hill London, ECN1 8FH</div> <div></div>	PROJECT	One Earth Solar Farm	DRAWN BY	JG	DRAWING NO. Figure 12-42a-W
	DRAWING TITLE	Appendix 12-6: Representative Viewpoint Photography	CHECKED BY	SG	
	CLIENT	One Earth Solar Ltd	DATE	30/04/2024	REV -





Viewpoint 42a      View from public footpath (NT/Ragnall/FP2), (Summer)

Type: Type 1  
Projection: Cylindrical  
48% @ A3, 96% @ A1  
Camera: Canon EOS 6D MkII  
Lens: Canon 50mm

Looking direction: north  
HfoV: 90 degrees  
Date captured: 06.03.2024

<div><div>ICENI PROJECTS LIMITED</div><div>Da Vinci House 44 Saffron Hill</div><div>London, ECN1 8FH</div></div> <div></div>	PROJECT	One Earth Solar Farm	DRAWN BY	JG	DRAWING NO. Figure 12-42a-S
	DRAWING TITLE	Appendix 12-6: Representative Viewpoint Photography	CHECKED BY	SG	
	CLIENT	One Earth Solar Ltd	DATE	30/04/2024	REV -





Viewpoint 42b      View from public footpath (NT/Ragnall/FP2) (Winter)

Type: Type 1  
Projection: Cylindrical  
48% @ A3, 96% @ A1  
Camera: Canon EOS 6D MkII  
Lens: Canon 50mm

Looking direction: east  
HfoV: 90 degrees  
Date captured: 06.03.2024

<div><div>ICENI PROJECTS LIMITED</div><div>Da Vinci House 44 Saffron Hill</div><div>London, ECN1 8FH</div></div> <div></div>	PROJECT	One Earth Solar Farm	DRAWN BY	JG	DRAWING NO.
	DRAWING TITLE	Appendix 12-6: Representative Viewpoint Photography	CHECKED BY	SG	Figure 12-42b-W
	CLIENT	One Earth Solar Ltd	DATE	30/04/2024	REV
					-





Viewpoint 42b      View from public footpath (NT/Ragnall/FP2) (Summer)

Type: Type 1  
Projection: Cylindrical  
48% @ A3, 96% @ A1  
Camera: Canon EOS 6D MkII  
Lens: Canon 50mm

Looking direction: east  
HfoV: 90 degrees  
Date captured: 06.03.2024

<div><div>ICENI PROJECTS LIMITED</div><div>Da Vinci House 44 Saffron Hill</div><div>London, ECN1 8FH</div></div> <div></div>	PROJECT	One Earth Solar Farm	DRAWN BY	JG	DRAWING NO.
	DRAWING TITLE	Appendix 12-6: Representative Viewpoint Photography	CHECKED BY	SG	Figure 12-42b-s
	CLIENT	One Earth Solar Ltd	DATE	30/04/2024	REV
					-






Viewpoint 43      View from public footpath (NT/Ragnall/FP2), east of Ragnall (Winter)

Type: Type 1  
Projection: Cylindrical  
48% @ A3, 96% @ A1  
Camera: Canon EOS 6D MkII  
Lens: Canon 50mm

Looking direction: south  
HfoV: 90 degrees  
Date captured: 06.03.2024

<div>ICENI PROJECTS LIMITED</div> <div>Da Vinci House 44 Saffron Hill</div> <div>London, ECN1 8FH</div> <div></div>	PROJECT	One Earth Solar Farm	DRAWN BY	JG	DRAWING NO. Figure 12-47c-W
	DRAWING TITLE	Appendix 12-6: Representative Viewpoint Photography	CHECKED BY	SG	
	CLIENT	One Earth Solar Ltd	DATE	30/04/2024	REV -





Viewpoint 43

View from public footpath (NT/Ragnall/FP2), east of Ragnall (Summer)

Type: Type 1  
Projection: Cylindrical  
48% @ A3, 96% @ A1  
Camera: Canon EOS 6D MkII  
Lens: Canon 50mm

Looking direction: south  
HfoV: 90 degrees  
Date captured: 06.03.2024





Viewpoint 44

View from public footpath (NT/Ragnall/FP4), west of Ragnall (Winter)

Type: Type 1  
Projection: Cylindrical  
48% @ A3, 96% @ A1  
Camera: Canon EOS 6D MkII  
Lens: Canon 50mm

Looking direction: west  
HfoV: 90 degrees  
Date captured: 06.03.2024






Viewpoint 44      View from public footpath (NT/Ragnall/FP4), west of Ragnall (Summer)

Type: Type 1  
Projection: Cylindrical  
48% @ A3, 96% @ A1  
Camera: Canon EOS 6D MkII  
Lens: Canon 50mm

Looking direction: west  
HfoV: 90 degrees  
Date captured: 06.03.2024

<div>ICENI PROJECTS LIMITED</div> <div>Da Vinci House 44 Saffron Hill</div> <div>London, ECN1 8FH</div> <div></div>	PROJECT	One Earth Solar Farm	DRAWN BY	JG	DRAWING NO.
	DRAWING TITLE	Appendix 12-6: Representative Viewpoint Photography	CHECKED BY	SG	Figure 12-44-S
	CLIENT	One Earth Solar Ltd	DATE	30/04/2024	REV
					-






Viewpoint 45      View from public footpath (NT/Darlington/FP8), at America Farm (Winter)

Type: Type 1  
Projection: Cylindrical  
48% @ A3, 96% @ A1  
Camera: Canon EOS 6D MkII  
Lens: Canon 50mm

Looking direction: east  
HfoV: 90 degrees  
Date captured: 06.03.2024

<div>ICENI PROJECTS LIMITED</div> <div>Da Vinci House 44 Saffron Hill</div> <div>London, ECN1 8FH</div> <div></div>	PROJECT	One Earth Solar Farm	DRAWN BY	JG	DRAWING NO.
	DRAWING TITLE	Appendix 12-6: Representative Viewpoint Photography	CHECKED BY	SG	Figure 12-45-W
	CLIENT	One Earth Solar Ltd	DATE	30/04/2024	REV






Viewpoint 45      View from public footpath (NT/Darlington/FP8), at America Farm (Summer)

Type: Type 1  
Projection: Cylindrical  
48% @ A3, 96% @ A1  
Camera: Canon EOS 6D MkII  
Lens: Canon 50mm

Looking direction: east  
HfoV: 90 degrees  
Date captured: 06.03.2024

<div>ICENI PROJECTS LIMITED</div> <div>Da Vinci House 44 Saffron Hill</div> <div>London, ECN1 8FH</div> <div></div>	PROJECT	One Earth Solar Farm	DRAWN BY	JG	DRAWING NO.
	DRAWING TITLE	Appendix 12-6: Representative Viewpoint Photography	CHECKED BY	SG	Figure 12-45-S
	CLIENT	One Earth Solar Ltd	DATE	30/04/2024	REV






Viewpoint 46      View from A57, east of Darlton (Winter)

Type: Type 1  
Projection: Cylindrical  
48% @ A3, 96% @ A1  
Camera: Canon EOS 6D MkII  
Lens: Canon 50mm

Looking direction: east  
HfoV: 90 degrees  
Date captured: 06.03.2024

<div>ICENI PROJECTS LIMITED</div> <div>Da Vinci House 44 Saffron Hill</div> <div>London, ECN1 8FH</div> <div></div>	PROJECT	One Earth Solar Farm	DRAWN BY	JG	DRAWING NO.
	DRAWING TITLE	Appendix 12-6: Representative Viewpoint Photography	CHECKED BY	SG	Figure 12-46-S
	CLIENT	One Earth Solar Ltd	DATE	30/04/2024	REV
					-






Viewpoint 46      View from A57, east of Darlton (Summer)

Type: Type 1  
Projection: Cylindrical  
48% @ A3, 96% @ A1  
Camera: Canon EOS 6D MkII  
Lens: Canon 50mm

Looking direction: east  
HfoV: 90 degrees  
Date captured: 06.03.2024

<div>ICENI PROJECTS LIMITED</div> <div>Da Vinci House 44 Saffron Hill</div> <div>London, ECN1 8FH</div> <div></div>	PROJECT	One Earth Solar Farm	DRAWN BY	JG	DRAWING NO.
	DRAWING TITLE	Appendix 12-6: Representative Viewpoint Photography	CHECKED BY	SG	Figure 12-46-S
	CLIENT	One Earth Solar Ltd	DATE	30/04/2024	REV






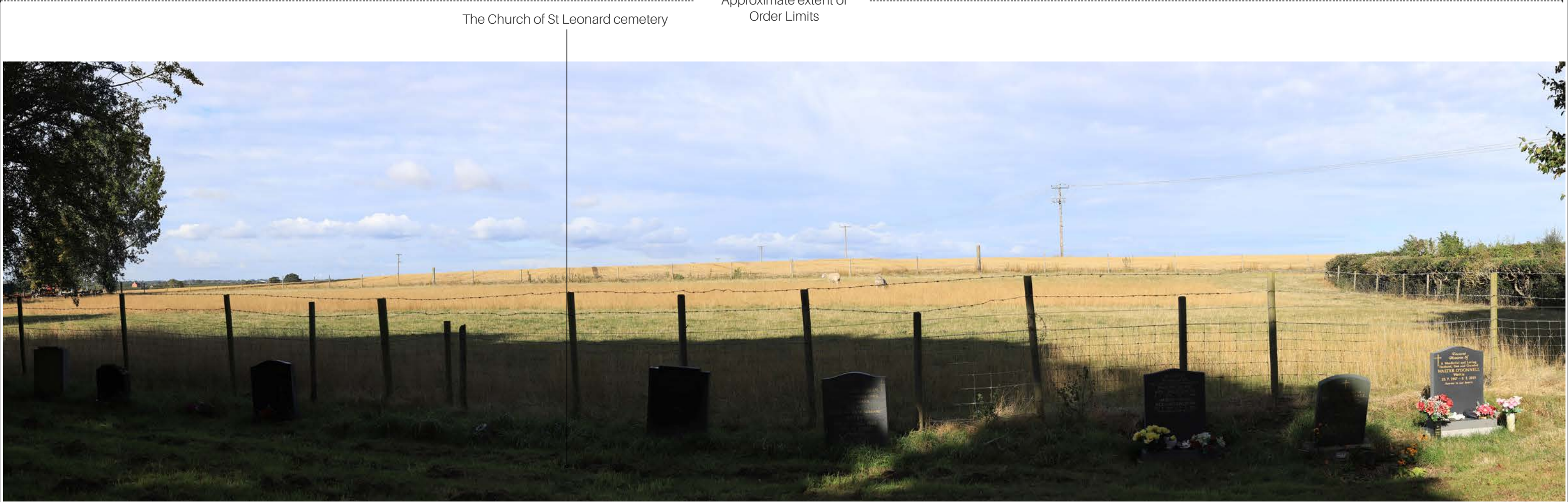
Viewpoint 47a      View from the Church of St Leonard Cemetery, Ragnall (Winter)

Type: Type 1  
Projection: Cylindrical  
48% @ A3, 96% @ A1  
Camera: Canon EOS 6D MkII  
Lens: Canon 50mm

Looking direction: west  
HfoV: 90 degrees  
Date captured: 06.03.2024

<div>ICENI PROJECTS LIMITED</div> <div>Da Vinci House 44 Saffron Hill</div> <div>London, ECN1 8FH</div> <div></div>	PROJECT	One Earth Solar Farm	DRAWN BY	JG	DRAWING NO.
	DRAWING TITLE	Appendix 12-6: Representative Viewpoint Photography	CHECKED BY	SG	Figure 12-47a-W
	CLIENT	One Earth Solar Ltd	DATE	30/04/2024	REV





Viewpoint 47a      View from the Church of St Leonard Cemetery, Ragnall (Summer)

Type: Type 1  
Projection: Cylindrical  
48% @ A3, 96% @ A1  
Camera: Canon EOS 6D MkII  
Lens: Canon 50mm

Looking direction: west  
HfoV: 90 degrees  
Date captured: 06.03.2024

<div><b>ICENI PROJECTS LIMITED</b> Da Vinci House 44 Saffron Hill London, ECN1 8FH</div> <div></div>	PROJECT	One Earth Solar Farm	DRAWN BY	JG	DRAWING NO.
	DRAWING TITLE	Appendix 12-6: Representative Viewpoint Photography	CHECKED BY	SG	Figure 12-47a-S
	CLIENT	One Earth Solar Ltd	DATE	30/04/2024	REV
					-





Viewpoint 47b      View from the Church of St Leonard Cemetery, Ragnall (Winter)

Type: Type 1  
Projection: Cylindrical  
48% @ A3, 96% @ A1  
Camera: Canon EOS 6D MkII  
Lens: Canon 50mm

Looking direction: west  
HfoV: 90 degrees  
Date captured: 06.03.2024

<div><div>ICENI PROJECTS LIMITED</div><div>Da Vinci House 44 Saffron Hill</div><div>London, ECN1 8FH</div></div> <div></div>	PROJECT	One Earth Solar Farm	DRAWN BY	JG	DRAWING NO.
	DRAWING TITLE	Appendix 12-6: Representative Viewpoint Photography	CHECKED BY	SG	Figure 12-47b-W
	CLIENT	One Earth Solar Ltd	DATE	30/04/2024	REV
					-





Viewpoint 47b      View from the Church of St Leonard Cemetery, Ragnall (Summer)

Type: Type 1  
Projection: Cylindrical  
48% @ A3, 96% @ A1  
Camera: Canon EOS 6D MkII  
Lens: Canon 50mm

Looking direction: west  
HfoV: 90 degrees  
Date captured: 06.03.2024

<div>ICENI PROJECTS LIMITED</div> <div>Da Vinci House 44 Saffron Hill</div> <div>London, ECN1 8FH</div> <div>iceni</div>	PROJECT	One Earth Solar Farm	DRAWN BY	JG	DRAWING NO.
	DRAWING TITLE	Appendix 12-6: Representative Viewpoint Photography	CHECKED BY	SG	Figure 12-47b-s
	CLIENT	One Earth Solar Ltd	DATE	30/04/2024	REV
					-






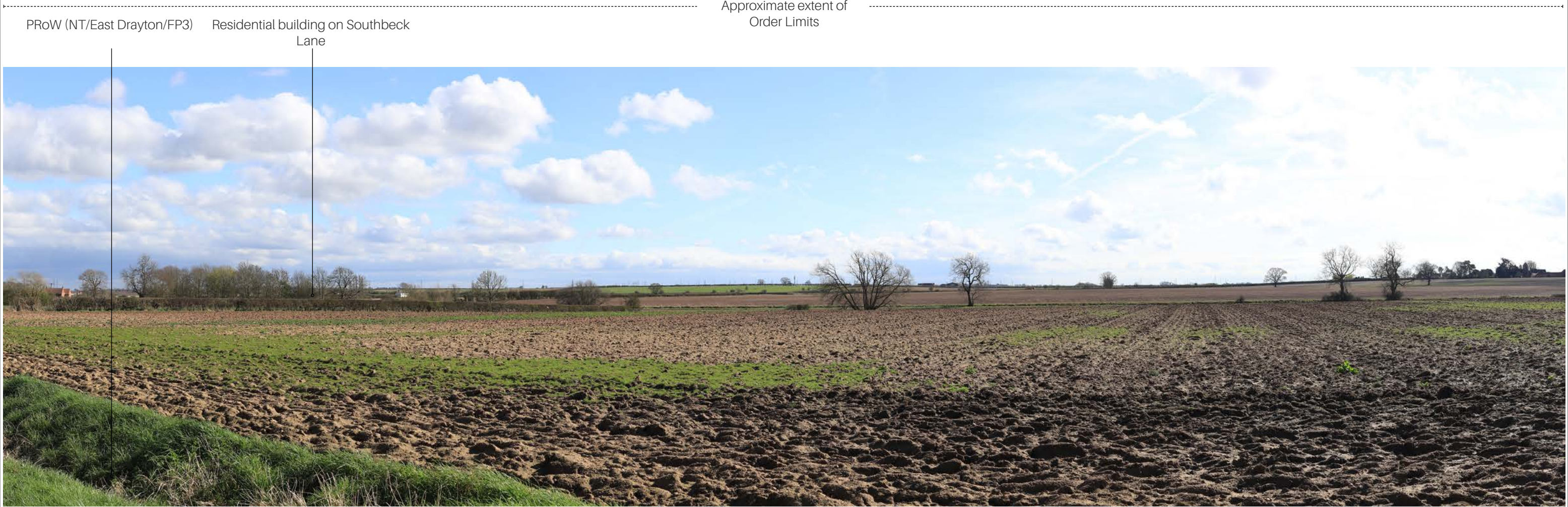
Viewpoint 48      View from public footpath (NT/Darlington/FP2), north east of Darlington (Winter)

Type: Type 1  
Projection: Cylindrical  
48% @ A3, 96% @ A1  
Camera: Canon EOS 6D MkII  
Lens: Canon 50mm

Looking direction: south east  
HfoV: 90 degrees  
Date captured: 06.03.2024

<div><div>ICENI PROJECTS LIMITED</div><div>Da Vinci House 44 Saffron Hill</div><div>London, ECN1 8FH</div></div> <div></div>	PROJECT	One Earth Solar Farm	DRAWN BY	JG	DRAWING NO. Figure 12-48-W
	DRAWING TITLE	Appendix 12-6: Representative Viewpoint Photography	CHECKED BY	SG	
	CLIENT	One Earth Solar Ltd	DATE	30/04/2024	REV -





Viewpoint 49

View from public footpath (NT/East Drayton/FP3), south east of East Drayton (Winter)

Type: Type 1  
Projection: Cylindrical  
48% @ A3, 96% @ A1  
Camera: Canon EOS 6D MkII  
Lens: Canon 50mm

Looking direction: south east  
HfoV: 90 degrees  
Date captured: 06.03.2024





Viewpoint 49

View from public footpath (NT/East Drayton/FP3), south east of East Drayton (Summer)

Type: Type 1  
Projection: Cylindrical  
48% @ A3, 96% @ A1  
Camera: Canon EOS 6D MkII  
Lens: Canon 50mm

Looking direction: south east  
HfoV: 90 degrees  
Date captured: 06.03.2024






Viewpoint 50      View from public footpath (NT/East Drayton/FP15), East Drayton (Winter)

Type: Type 1  
Projection: Cylindrical  
48% @ A3, 96% @ A1  
Camera: Canon EOS 6D MkII  
Lens: Canon 50mm

Looking direction: south east  
HfoV: 90 degrees  
Date captured: 06.03.2024


<div>ICENI PROJECTS LIMITED</div> <div>Da Vinci House 44 Saffron Hill</div> <div>London, ECN1 8FH</div> <div></div>	PROJECT	One Earth Solar Farm	DRAWN BY	JG	DRAWING NO.
	DRAWING TITLE	Appendix 12-6: Representative Viewpoint Photography	CHECKED BY	SG	Figure 12-50-W
	CLIENT	One Earth Solar Ltd	DATE	30/04/2024	REV
					-





Viewpoint 50      View from public footpath (NT/East Drayton/FP15), East Drayton (Summer)

Type: Type 1  
Projection: Cylindrical  
48% @ A3, 96% @ A1  
Camera: Canon EOS 6D MkII  
Lens: Canon 50mm  
Looking direction: south east  
HfoV: 90 degrees  
Date captured: 06.03.2024

<div><div>ICENI PROJECTS LIMITED</div><div>Da Vinci House 44 Saffron Hill</div><div>London, ECN1 8FH</div></div> <div></div>	PROJECT	One Earth Solar Farm	DRAWN BY	JG	DRAWING NO.
	DRAWING TITLE	Appendix 12-6: Representative Viewpoint Photography	CHECKED BY	SG	Figure 12-50-S
	CLIENT	One Earth Solar Ltd	DATE	30/04/2024	REV
					-




Long Lane



Viewpoint 51      View from Long Lane, East Drayton (Winter)

Type: Type 1  
Projection: Cylindrical  
48% @ A3, 96% @ A1  
Camera: Canon EOS 6D MkII  
Lens: Canon 50mm

Looking direction: south east  
HfoV: 90 degrees  
Date captured: 06.03.2024

<div>ICENI PROJECTS LIMITED</div> <div>Da Vinci House 44 Saffron Hill</div> <div>London, ECN1 8FH</div> <div></div>	PROJECT	One Earth Solar Farm	DRAWN BY	JG	DRAWING NO.
	DRAWING TITLE	Appendix 12-6: Representative Viewpoint Photography	CHECKED BY	SG	Figure 12-51-W
	CLIENT	One Earth Solar Ltd	DATE	30/04/2024	REV
					-






Viewpoint 51      View from Long Lane, East Drayton (Summer)

Type: Type 1  
Projection: Cylindrical  
48% @ A3, 96% @ A1  
Camera: Canon EOS 6D MkII  
Lens: Canon 50mm

Looking direction: south east  
HfoV: 90 degrees  
Date captured: 06.03.2024

<div><b>ICENI PROJECTS LIMITED</b> Da Vinci House 44 Saffron Hill London, ECN1 8FH</div> <div></div>	PROJECT	One Earth Solar Farm	DRAWN BY	JG	DRAWING NO.
	DRAWING TITLE	Appendix 12-6: Representative Viewpoint Photography	CHECKED BY	SG	Figure 12-51-S
	CLIENT	One Earth Solar Ltd	DATE	30/04/2024	REV
					-




PRoW (NT/Laneham/BW14)



Viewpoint 52      View from public bridleway (NT/Laneham/BW14) (Winter)

Type: Type 1  
Projection: Cylindrical  
48% @ A3, 96% @ A1  
Camera: Canon EOS 6D MkII  
Lens: Canon 50mm  
Looking direction: south east  
HfoV: 90 degrees  
Date captured: 06.03.2024

<div><div>ICENI PROJECTS LIMITED</div><div>Da Vinci House 44 Saffron Hill</div><div>London, ECN1 8FH</div></div> <div></div>	PROJECT	One Earth Solar Farm	DRAWN BY	JG	DRAWING NO.
	DRAWING TITLE	Appendix 12-6: Representative Viewpoint Photography	CHECKED BY	SG	Figure 12-52-W
	CLIENT	One Earth Solar Ltd	DATE	30/04/2024	REV
					-




PRow (NT/Laneham/BW14)



Viewpoint 52      iew from public bridleway (NT/Laneham/BW14) way (NT/Laneham/BW14) (Summer)

Type: Type 1  
Projection: Cylindrical  
48% @ A3, 96% @ A1  
Camera: Canon EOS 6D MkII  
Lens: Canon 50mm  
Looking direction: south east  
HfoV: 90 degrees  
Date captured: 06.03.2024

<div>ICENI PROJECTS LIMITED</div> <div>Da Vinci House 44 Saffron Hill</div> <div>London, ECN1 8FH</div> <div></div>	PROJECT	One Earth Solar Farm	DRAWN BY	JG	DRAWING NO.
	DRAWING TITLE	Appendix 12-6: Representative Viewpoint Photography	CHECKED BY	SG	Figure 12-52-S
	CLIENT	One Earth Solar Ltd	DATE	30/04/2024	REV
					-






Viewpoint 53      View from public bridleway (NT/Laneham/BW14)(Hoo Lane) (Winter)

Type: Type 1  
Projection: Cylindrical  
48% @ A3, 96% @ A1  
Camera: Canon EOS 6D MkII  
Lens: Canon 50mm

Looking direction: south  
HfoV: 90 degrees  
Date captured: 06.03.2024

<div>ICENI PROJECTS LIMITED</div> <div>Da Vinci House 44 Saffron Hill</div> <div>London, ECN1 8FH</div> <div></div>	PROJECT	One Earth Solar Farm	DRAWN BY	JG	DRAWING NO.
	DRAWING TITLE	Appendix 12-6: Representative Viewpoint Photography	CHECKED BY	SG	Figure 12-54-W
	CLIENT	One Earth Solar Ltd	DATE	30/04/2024	REV
					-





Viewpoint 53

View from public bridleway (NT/Laneham/BW14) (Hoo Lane) (Summer)

Type: Type 1  
Projection: Cylindrical  
48% @ A3, 96% @ A1  
Camera: Canon EOS 6D MkII  
Lens: Canon 50mm

Looking direction: south  
HfoV: 90 degrees  
Date captured: 06.03.2024






Viewpoint 54      View from Trent Valley Way, south of Laneham (Winter)

Type: Type 1  
Projection: Cylindrical  
48% @ A3, 96% @ A1  
Camera: Canon EOS 6D MkII  
Lens: Canon 50mm

Looking direction: south  
HfoV: 90 degrees  
Date captured: 06.03.2024

<div><div>ICENI PROJECTS LIMITED</div><div>Da Vinci House 44 Saffron Hill</div><div>London, ECN1 8FH</div></div> <div></div>	PROJECT	One Earth Solar Farm	DRAWN BY	JG	DRAWING NO.
	DRAWING TITLE	Appendix 12-6: Representative Viewpoint Photography	CHECKED BY	SG	Figure 12-54-W
	CLIENT	One Earth Solar Ltd	DATE	30/04/2024	REV
					-






Viewpoint 54      View from Trent Valley Way, south of Laneham (Summer)

Type: Type 1  
Projection: Cylindrical  
48% @ A3, 96% @ A1  
Camera: Canon EOS 6D MkII  
Lens: Canon 50mm

Looking direction: south  
HfoV: 90 degrees  
Date captured: 06.03.2024

<div>ICENI PROJECTS LIMITED</div> <div>Da Vinci House 44 Saffron Hill</div> <div>London, ECN1 8FH</div> <div></div>	PROJECT	One Earth Solar Farm	DRAWN BY	JG	DRAWING NO.
	DRAWING TITLE	Appendix 12-6: Representative Viewpoint Photography	CHECKED BY	SG	Figure 12-54-S
	CLIENT	One Earth Solar Ltd	DATE	30/04/2024	REV
					-






Viewpoint 55      View from public footpath (NT/Dunham-On-Trent/FP7), south of Dunham on Trent (Winter)

Type: Type 1  
Projection: Cylindrical  
48% @ A3, 96% @ A1  
Camera: Canon EOS 6D MkII  
Lens: Canon 50mm

Looking direction: south  
HfoV: 90 degrees  
Date captured: 06.03.2024

<div>ICENI PROJECTS LIMITED</div> <div>Da Vinci House 44 Saffron Hill</div> <div>London, ECN1 8FH</div> <div></div>	PROJECT	One Earth Solar Farm	DRAWN BY	JG	DRAWING NO. Figure 12-55-W
	DRAWING TITLE	Appendix 12-6: Representative Viewpoint Photography	CHECKED BY	SG	
	CLIENT	One Earth Solar Ltd	DATE	30/04/2024	REV -





Viewpoint 55

View from public footpath (NT/Dunham-On-Trent/FP7), south of Dunham on Trent (Summer)

Type: Type 1  
Projection: Cylindrical  
48% @ A3, 96% @ A1  
Camera: Canon EOS 6D MkII  
Lens: Canon 50mm

Looking direction: south  
HfoV: 90 degrees  
Date captured: 06.03.2024






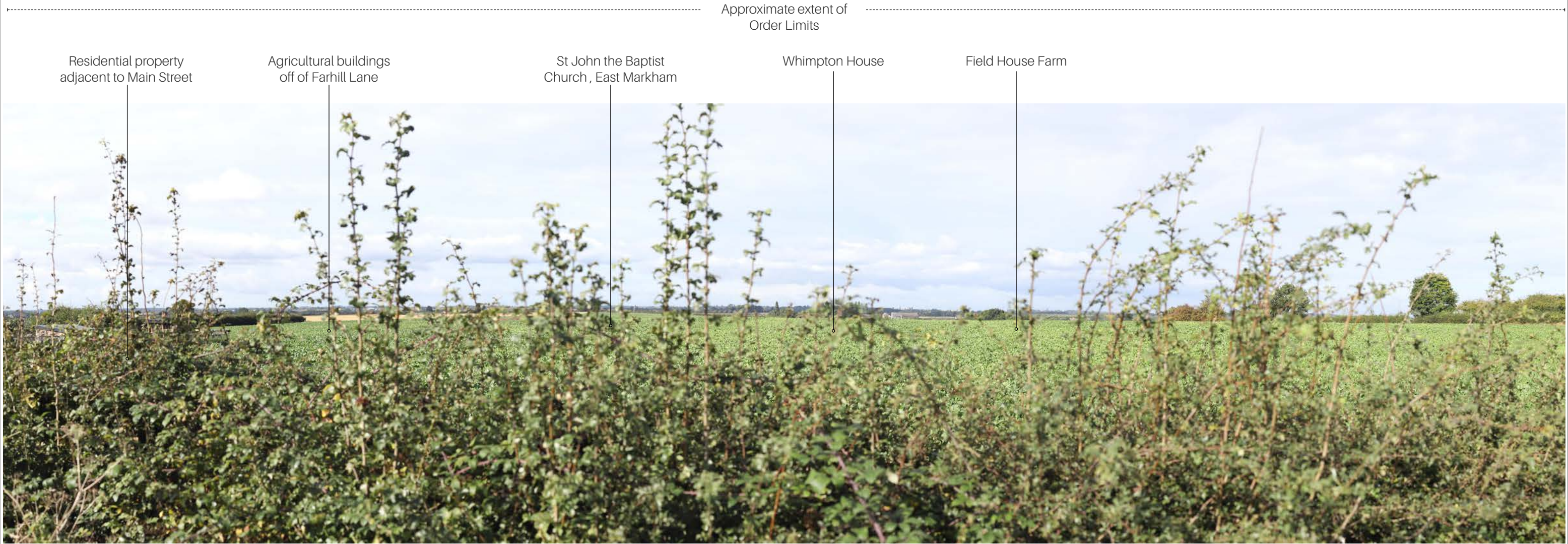
Viewpoint 56      View from north of Ragnall (Winter)

Type: Type 1  
Projection: Cylindrical  
48% @ A3, 96% @ A1  
Camera: Canon EOS 6D MkII  
Lens: Canon 50mm

Looking direction: west  
HfoV: 90 degrees  
Date captured: 06.03.2024

<div>ICENI PROJECTS LIMITED</div> <div>Da Vinci House 44 Saffron Hill</div> <div>London, ECN1 8FH</div> <div></div>	PROJECT	One Earth Solar Farm	DRAWN BY	JG	DRAWING NO.
	DRAWING TITLE	Appendix 12-6: Representative Viewpoint Photography	CHECKED BY	SG	Figure 12-56-W
	CLIENT	One Earth Solar Ltd	DATE	30/04/2024	REV
					-






Viewpoint 56      View from north of Ragnall (Summer)

Type: Type 1  
Projection: Cylindrical  
48% @ A3, 96% @ A1  
Camera: Canon EOS 6D MkII  
Lens: Canon 50mm

Looking direction: west  
HfoV: 90 degrees  
Date captured: 06.03.2024

<div>ICENI PROJECTS LIMITED</div> <div>Da Vinci House 44 Saffron Hill</div> <div>London, ECN1 8FH</div> <div></div>	PROJECT	One Earth Solar Farm	DRAWN BY	JG	DRAWING NO.
	DRAWING TITLE	Appendix 12-6: Representative Viewpoint Photography	CHECKED BY	SG	Figure 12-56-S
	CLIENT	One Earth Solar Ltd	DATE	30/04/2024	REV
					-





Viewpoint 57      View from A1133, north of junction with Moor Lane (Summer)

Type: Type 1  
Projection: Cylindrical  
48% @ A3, 96% @ A1  
Camera: Canon EOS 6D MkII  
Lens: Canon 50mm

Looking direction: east  
HfoV: 90 degrees  
Date captured: 11.09.2024

<div>ICENI PROJECTS LIMITED</div> <div>Da Vinci House 44 Saffron Hill</div> <div>London, ECN1 8FH</div> <div></div>	PROJECT	One Earth Solar Farm	DRAWN BY	JG	DRAWING NO. Figure 12-57-S
	DRAWING TITLE	Appendix 12-6: Representative Viewpoint Photography	CHECKED BY	SG	
	CLIENT	One Earth Solar Ltd	DATE	30/04/2024	REV -




Approximate extent of Order Limits



Viewpoint 58a      View from public bridleway (NT/Ragnall/BW3), along Fledborough Beck, Ragnall (Summer)

Type: Type 1  
Projection: Cylindrical  
48% @ A3, 96% @ A1  
Camera: Canon EOS 6D MkII  
Lens: Canon 50mm

Looking direction: west  
HfoV: 90 degrees  
Date captured: 11.09.2024

<div>ICENI PROJECTS LIMITED</div> <div>Da Vinci House 44 Saffron Hill</div> <div>London, ECN1 8FH</div> <div></div>	PROJECT	One Earth Solar Farm	DRAWN BY	JG	DRAWING NO.
	DRAWING TITLE	Appendix 12-6: Representative Viewpoint Photography	CHECKED BY	SG	Figure 12-68-S
	CLIENT	One Earth Solar Ltd	DATE	30/04/2024	REV
					-






Viewpoint 58b

View from public bridleway (NT/Ragnall/BW3), along Fledborough Beck, Ragnall (Summer)

Type: Type 1  
Projection: Cylindrical  
48% @ A3, 96% @ A1  
Camera: Canon EOS 6D MkII  
Lens: Canon 50mm

Looking direction: south  
HfoV: 90 degrees  
Date captured: 11.09.2024

<div><div>ICENI PROJECTS LIMITED</div><div>Da Vinci House 44 Saffron Hill</div><div>London, ECN1 8FH</div></div> <div></div>	PROJECT	One Earth Solar Farm	DRAWN BY	JG	DRAWING NO.
	DRAWING TITLE	Appendix 12-6: Representative Viewpoint Photography	CHECKED BY	SG	Figure 12-68-S
	CLIENT	One Earth Solar Ltd	DATE	30/04/2024	REV
					-






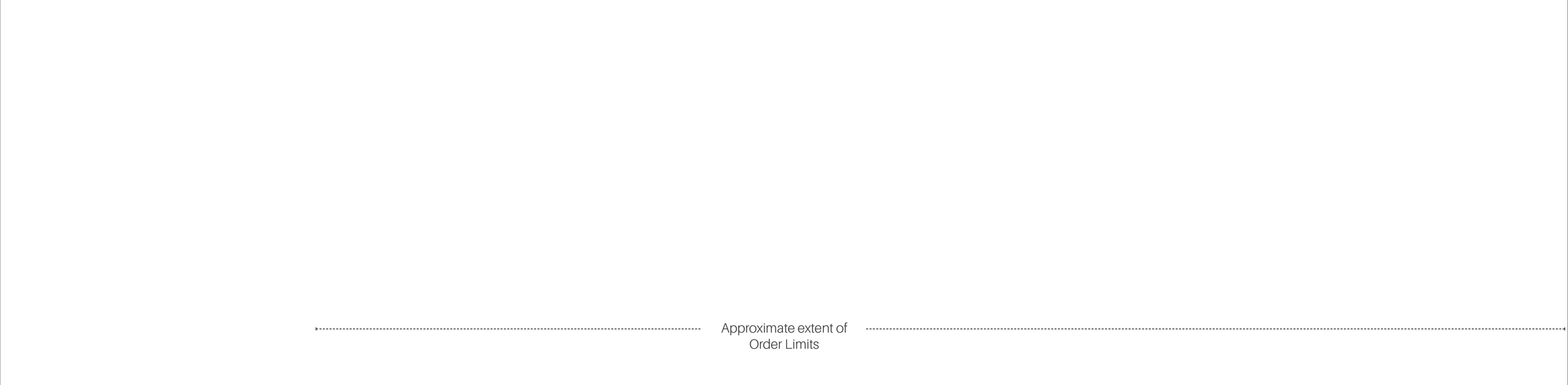
Viewpoint 59      View from A57 near to Whimpton House (Summer)

Type: Type 1  
Projection: Cylindrical  
48% @ A3, 96% @ A1  
Camera: Canon EOS 6D MkII  
Lens: Canon 50mm

Looking direction: south  
HfoV: 90 degrees  
Date captured: 11.09.2024

<div>ICENI PROJECTS LIMITED</div> <div>Da Vinci House 44 Saffron Hill</div> <div>London, ECN1 8FH</div> <div></div>	PROJECT	One Earth Solar Farm	DRAWN BY	JG	DRAWING NO.
	DRAWING TITLE	Appendix 12-6: Representative Viewpoint Photography	CHECKED BY	SG	Figure 12-59-S
	CLIENT	One Earth Solar Ltd	DATE	30/04/2024	REV
					-






----- Approximate extent of Order Limits -----



Viewpoint 60      View from A6075 near to Darlton Gaps (Summer)

Type: Type 1  
Projection: Cylindrical  
48% @ A3, 96% @ A1  
Camera: Canon EOS 6D MkII  
Lens: Canon 50mm

Looking direction: east  
HfoV: 90 degrees  
Date captured: 11.09.2024

<div><div>ICENI PROJECTS LIMITED</div><div>Da Vinci House 44 Saffron Hill</div><div>London, ECN1 8FH</div></div> <div></div>	PROJECT	One Earth Solar Farm	DRAWN BY	JG	DRAWING NO.
	DRAWING TITLE	Appendix 12-6: Representative Viewpoint Photography	CHECKED BY	SG	Figure 12-60-S
	CLIENT	One Earth Solar Ltd	DATE	30/04/2024	REV
					-





Viewpoint 61      View from Marnham Road south of Merryfields Farm (Summer)

Type: Type 1  
Projection: Cylindrical  
48% @ A3, 96% @ A1  
Camera: Canon EOS 6D MkII  
Lens: Canon 50mm

Looking direction: east  
HfoV: 90 degrees  
Date captured: 11.09.2024

<div><div>ICENI PROJECTS LIMITED</div><div>Da Vinci House 44 Saffron Hill</div><div>London, ECN1 8FH</div></div> <div></div>	PROJECT	One Earth Solar Farm	DRAWN BY	JG	DRAWING NO.
	DRAWING TITLE	Appendix 12-6: Representative Viewpoint Photography	CHECKED BY	SG	Figure 12-61-S
	CLIENT	One Earth Solar Ltd	DATE	30/04/2024	REV
					-





Viewpoint 62      View from Marnham Road east of Park Cottage (Summer)

Type: Type 1  
Projection: Cylindrical  
48% @ A3, 96% @ A1  
Camera: Canon EOS 6D MkII  
Lens: Canon 50mm

Looking direction: west  
HfoV: 90 degrees  
Date captured: 11.09.2024





Viewpoint 63      View from public footpath (NT/Fledborough/FP1), south of Woodcotes, Fledborough (Summer)

Type: Type 1  
Projection: Cylindrical  
48% @ A3, 96% @ A1  
Camera: Canon EOS 6D MkII  
Lens: Canon 50mm

Looking direction: west  
HfoV: 90 degrees  
Date captured: 11.09.2024

<div><div>ICENI PROJECTS LIMITED</div><div>Da Vinci House 44 Saffron Hill</div><div>London, ECN1 8FH</div></div> <div></div>	PROJECT	One Earth Solar Farm	DRAWN BY	JG	DRAWING NO.
	DRAWING TITLE	Appendix 12-6: Representative Viewpoint Photography	CHECKED BY	SG	Figure 12-63-S
	CLIENT	One Earth Solar Ltd	DATE	30/04/2024	REV
					-





EXISTING VIEW

FIGURE 11.13.1

To be viewed at a comfortable arm’s length



Camera make & model	- Canon EOS 6D MkII	Viewpoint height (AOD)	- 7m	Visualisation Type	- Type 3 (LI TGN 06/19)
Lens make & focal length	- Canon EF 50mm, f/1.4 USM	Distance from site	- 0m	Horizontal Field of View	- 90°
Date & time of photograph	- 08/03/2024 @ 10:31	Projection	- Cylindrical	Height of camera AGL	- 1.5m
OS grid reference	- 481782 , 372986	Enlargement factor	- 96%	Page size / Image size (mm)	- 841 x 297 / 820 x 235

ONE EARTH SOLAR FARM - WINTER VIEWS

VIEWPOINT 1 - EXISTING

VIEW FROM TRENT VALLEY WAY, NORTH-WEST OF NORTH CLIFTON





PHOTOMONTAGE - YEAR 1

FIGURE 11.13.1A



Camera make & model	- Canon EOS 6D MkII	Viewpoint height (AOD)	- 7m	Visualisation Type	- Type 3 (LI TGN 06/19)
Lens make & focal length	- Canon EF 50mm, f/1.4 USM	Distance from site	- 0m	Horizontal Field of View	- 90°
Date & time of photograph	- 08/03/2024 @ 10:31	Projection	- Cylindrical	Height of camera AGL	- 1.5m
OS grid reference	- 481782 , 372986	Enlargement factor	- 96%	Page size / Image size (mm)	- 841 x 297 / 820 x 235

To be viewed at a comfortable arm’s length

ONE EARTH SOLAR FARM - WINTER VIEWS

VIEWPOINT 1 - YEAR 1

VIEW FROM TRENT VALLEY WAY, NORTH-WEST OF NORTH CLIFTON





PHOTOMONTAGE - YEAR 15

FIGURE 11.13.1B

To be viewed at a comfortable arm’s length



Camera make & model	- Canon EOS 6D MkII	Viewpoint height (AOD)	- 7m	Visualisation Type	- Type 3 (LI TGN 06/19)
Lens make & focal length	- Canon EF 50mm, f/1.4 USM	Distance from site	- 0m	Horizontal Field of View	- 90°
Date & time of photograph	- 08/03/2024 @ 10:31	Projection	- Cylindrical	Height of camera AGL	- 1.5m
OS grid reference	- 481782 , 372986	Enlargement factor	- 96%	Page size / Image size (mm)	- 841 x 297 / 820 x 235

ONE EARTH SOLAR FARM - WINTER VIEWS

VIEWPOINT 1 - YEAR 15

VIEW FROM TRENT VALLEY WAY, NORTH-WEST OF NORTH CLIFTON





EXISTING VIEW

FIGURE 11.13.2

To be viewed at a comfortable arm's length



Camera make & model	- Canon EOS 6D MkII	Viewpoint height (AOD)	- 20m	Visualisation Type	- Type 3 (LI TGN 06/19)
Lens make & focal length	- Canon EF 50mm, f/1.4 USM	Distance from site	- 330m	Horizontal Field of View	- 90°
Date & time of photograph	- 18/03/2024 @ 15:22	Projection	- Cylindrical	Height of camera AGL	- 1.5m
OS grid reference	- 482215 , 373409	Enlargement factor	- 96%	Page size / Image size (mm)	- 841 x 297 / 820 x 235

ONE EARTH SOLAR FARM - WINTER VIEWS

VIEWPOINT 2 (PART A) - EXISTING

VIEW FROM PUBLIC FOOTPATH (LL/NWOT/98/1)





PHOTOMONTAGE - YEAR 1

FIGURE 11.13.2A

To be viewed at a comfortable arm's length



Camera make & model	- Canon EOS 6D MkII	Viewpoint height (AOD)	- 20m	Visualisation Type	- Type 3 (LI TGN 06/19)
Lens make & focal length	- Canon EF 50mm, f/1.4 USM	Distance from site	- 330m	Horizontal Field of View	- 90°
Date & time of photograph	- 18/03/2024 @ 15:22	Projection	- Cylindrical	Height of camera AGL	- 1.5m
OS grid reference	- 482215 , 373409	Enlargement factor	- 96%	Page size / Image size (mm)	- 841 x 297 / 820 x 235

ONE EARTH SOLAR FARM - WINTER VIEWS

VIEWPOINT 2 (PART A) - YEAR 1

VIEW FROM PUBLIC FOOTPATH (LL/NWOT/98/1)